



We Weigh The World

CAS PRODUCT CATALOG

ENGLISH



WE WEIGH THE WORLD™

Since its founding in 1983, CAS Corporation consistently aims at becoming a leader in the international weighing industry. By offering a variety of products and dedicated customer service, CAS rapidly developed its global network system. With a manufacturing facility and Headquarter located in South Korea. CAS has expended its business territory further to United States, India, Russia, Turkey and China including active sale performance in over 120 overseas countries. Our global network and cutting-edge technology will ensure total customer satisfaction.

- | | | | |
|------|---|------|--|
| 1983 | Company established | 2006 | The first CAS Global Business Conference in Korea |
| 1989 | Acquired FCC US Official Standards | 2007 | The second CAS Global Business Conference in Korea
Awarded the Global Star prize
Awarded the Techno CEO prize |
| 1990 | Acquired NSC Australian Measuring Verification Standards
Assigned as a National Verification and Correction Facility (177)
Established CAS USA | 2008 | The third CAS Global Business Conference in Korea
Acquired certificate of quality control system of medical instrument
Selected as a electric scale providing company in Chinese standardized market |
| 1991 | Acquired NBS US Measuring Verification Standards
Approved by NTEP & UL, US Safety Standards | 2009 | Fourth CAS Global Business Conference in Korea
Established CAS Nicaragua |
| 1992 | Developed strain gage Established CAS Turkey
Developed the first label printer in the Korean market | 2010 | Established CAS Bangladesh Chittagong
Service center/office |
| 1993 | Approved by CSA (Canada) | 2011 | Acquired as Self-National verification & correction Facility
from Korean Agency for Technology and Standard |
| 1994 | Established CAS Russia
Acquired the first OIML, EU Standards | 2012 | Established Vietnam |
| 1995 | Established CAS China | 2013 | Jiashan factory, China, Completed
Nominated for WC300
Established CAS Chemical
Established CAS E&C |
| 1996 | Established Shanghai factory in China
Acquired the first ISO 9001 in the Korean weighing industry | 2014 | Chosen to execute 1 st year project for the World Class300
Designated as No.1 brand in Global Brand Competency Index(GBCI) |
| 1997 | Established CAS TSC (service center) in Russia | 2015 | Chosen to execute 2 nd year project for the World Class300
Received 2015 Global Excellence Awards |
| 1999 | Established CAS India
Acquired EC Self-Verification Certification | 2016 | Designated as No.1 brand in Global Customer Satisfaction Competency Index(GCSI) |
| 2000 | Awarded the Best Certification Company by ISO9000 | 2018 | Designated as No.1 brand in Global Brand Competency Index(GBCI)
Designated as No.1 brand in Global Customer Satisfaction Competency Index(GCSI) |
| 2001 | Awarded the Best Certification Company by ISO9000 for two consecutive years
Awarded the best prize for Precision technology
Acquired Japanese NMIJ Standards Certification
Established CAS New Zealand | | |
| 2002 | Awarded the Best Global Company by Japanese Management Association
Awarded Russia Golden Balance 2002 | | |
| 2003 | CAS Europe Tour | | |
| 2004 | Established CAS Poland | | |
| 2005 | Granted 30 million dollar export Tower from the government
Established CAS Deutschland Established Bangladesh | | |



CONTENTS



RETAIL PRODUCTS

Label Printing Scale

CL7200 Series	05
CL5500 Series	06
CL5200 / CL5200J	07
CL3000 Series	08
CL5000J-C / LP-1	09

Ticket Printing /Price Computing Scale

CT100 / PR-T	10
CP500 / AP	11
PR-II / PR ^{PLUS}	12
ER ^{PLUS} / ER ^{JR}	13
HS / EB	14

Label / Ticket

15

LABORATORY PRODUCTS

Analytical Balance

CAT	17
CAU / CU	18
CBX / CBL	19

Micro Weighing Scale

XE / CD-300 / MW-IN	20
---------------------	----

Weight

21

INDUSTRIAL PRODUCTS

Basic Scal

SW-II	24
AD-USB / ED/ED-H	25
FW500	26
SH / PW-II / RE	27

Scanner-Ready Scale / ECR Interface Scale

PDS / PD-II	28
PDC	29

Counting Scale

EC-II / EC	30
PR-C / CS	31
ECB / AC	32

Bench Scale

PB / BW-1N	33
CWP / CK200SC	34
DB-II / DB-Basic	35
DB-1H / HD	36
DL-N / ND-300/300H	37
DBI/SPS	38

Platform Scale

HFS / ROLL-ON	39
WCS / UFS / BFS	40

Vehicle Weighing Scale

Ez Lodec / LMT	41
RW-PLZ	42
RW-5000Z / RW-PL	43
RW-S/L / RW-P	44

Crane Scale

CASTON III ^{PLUS}	45
CASTON-II / CASTON-I	46
TM	47
NC-1 / IE-1700	48

Pallet Scale

CPS / CPS ^{PLUS} /MP	49
-------------------------------	----

Food waste Pickup Scale / Drum Scale

Fork Lift Scale

CBS ^{PLUS} / CDS ^{PLUS} / CFS	50
---	----

Logistics Inspection System

CLIS-200 / CLIS-500 / CLIS-700	51
--------------------------------	----

Auto Checker / Rejector

CCK-5500 / CCK-5900	52
CMS2000 / Rejector	53
CCK-5500-M / CFM-030KMS	54

Packing Machine

CTMAP / CNT / CXP	55
CVP / CTP / CNW	56
CPK / CNA / CNS	57

Indicator

CI-600A / CI-600D	58
CI-500A / CI-200A/CI-201A	59
CI-150A / CI-1580A / CI-2001A/B	60
CI-2400BS / CI-2001AS/BS / CI-200S/200SC	61
TWN / PDI / PBI / DBI	62
HDI / EBI / BI / IE-116 ^{PLUS}	63
CD-3000 / EXI-200AD / EXI-600AD	64

Weight Transmitter

WTM-200 / WTM-500	65
-------------------	----

Load Cell

66

Printer

72

Software

74



RETAIL WEIGHING SOLUTION™

RETAIL PRODUCTS

Distribution solution for businesses that are striving to provide services that satisfy customers.

Label Printing Scale CL7200 Series

Dual color LCD display

Multimedia scale

Ergonomic touchscreen display



User Display



CL7200-U



Product Movie

10.2" color, LCD operator display



Ergonomic touchscreen operating

Remote firmware update

updating deployed firmware without having physical access to the device running it is a very useful feature.

Various interfaces



Standard: USB 2.0 x 2, LAN, RS-232C, Cash drawer, USB Device
Option: WLAN



CL7200-D



CL7200-S

Model	CL7200 Series		
Max.capacity(kg)	15/30	6/15	15/30
Readability(g)	5/10	2/5	5/10
Resolution	1/3,000(Dual Interval)		
Printing speed(mm/sec)	100		
Label size(mm)	Width : 40-60, Length : 30-200		
Operating temperature(°C)	-10 ~ +40		
Power	AC 220V, 50/60Hz		
Platter size(mm)	380(W) x 250(D)		

Label Printing Scale

CL5500 Series

High-speed thermal printer

Cartridge-loading-type label installation

Free format label design

USB connection available

Wired/Wireless network



CL5500-P



CL5500-B



CL5500-R



CL5500-H



CL5500-S



CL5500-D

OPTION > Non-cartridge option (for ticket liner-less label) > Wireless LAN card > PC Manager program (CL-Works)
> Dust protection cover Large platter > Fish tray

Model	CL5500		
Max.capacity(kg)	3/6	6/15	15/30
Readability(g)	1/2	2/5	5/10
Resolution	1/3,000(Dual interval)		
Display type	7 Segment LCD + Graphic LCD		
Printing speed(mm/sec)	100		
Label size(mm)	Width : 40 ~ 60, Length : 30 ~ 120		
Operating temperature(°C)	-10 ~ +40		
Power	AC 100 ~ 240V, 50/60Hz		
Platter size(mm) (W x D)	B, P, R, S: 383 x 273 / H: 435 x 293 / D: 380 x 270		
Dimensions(mm) (W x D x H)	B: 408 x 432 x 173 / P: x 408 x 493 x 542 R: 408 x 493 x 607 / H: 420 x 281 x 706 S: 408 x 493 x 703 / D: 396 x 464 x 612		
Product Weight (kg)	B: 10.5 / P: 12 / R: 11.2 / H: 14.2 / S: 15 / D: 12.7		

Label Printing Scale

CL5200



Flexible & reliable network system(wired/wireless)

Easy loading paper cartridge

Free format label design

User friendly PC software



CL5200-B



CL5200-150



CL5200-P

OPTION

Wireless bridge card > PC manager program(CL-works) > Platter with back

Label Printing Scale CL5200J

Memory capacity:10,000 PLUs & 1,000 ingredients

Supporting free label format design

Cartridge-loading-type label installation

30 fixed format & 10 customized format design

Various interfaces

Firmware update via USB memory



P type

OPTION > Wireless bridge card
> PC manager program(CL-works)
> Platter with back rail



Model	CL5200			CL5200J	
	3/6	6/15	15/30	6/15	15/30
Max.capacity(kg)	3/6	6/15	15/30	6/15	15/30
Readability(g)	1/2	2/5	5/10	2/5	5/10
Resolution	1/3,000(Dual interval)				
Display type	Graphic LCD(208x48)			4 / 5 / 6 / 7 (tare / weight / unit / total)	
Printing speed (mm/sec)	Max. 100 mm/sec				
Label size(mm)	Width : 40 ~ 60, Length : 30 ~120				
Operating temperature (°C)	-10 ~ +40				
Power	AC 100 ~ 240V, 50/60Hz				
Platter size(mm) (W x D)	B, P: 380 x 250				
Dimensions(mm) (W x D x H)	B : 410 x 441 x 180 / P : 410 x 500 x 535.8				
Product Weight (kg)	B : 6.95 / P : 7.65				

Label Printing Scale

CL3000 Series

Scrolling message bar

Aluminum Body Construction

Detachable Pole Display (CL3000-P)

Durable printer mechanism

Firmware update via RS-232C or USB port

Interface: USB port, LAN, RJ11, RS-232C, optional wireless

Compatible with CL series



OPTION

Linerless Labels > Wireless LAN > CL-Works Pro (PC Management Software)

MODEL	CL3000					
Max. Capacity	3/6 kg	6/15 kg	15/30 kg	6/15 lb	15/30 lb	30/60 lb
Interval	1/2 g	2/5 g	5/10 g	0.002/ 0.005 lb	0.005/ 0.01 lb	0.01/ 0.02 lb
Max. Tare	-2.999 kg	-5.998 kg	-9.995 kg	-5.998 lb	-9.995 lb	-29.99 lb
A/D Conversion Rate	Approx. 8 times/sec.					
Measurement Type	Load Cell					
Platter Size	380 x 250 mm					
Dimensions(mm) (W x D x H)	B : 406 x 433 x 164 P : 407 x 472 x 545					
Key	B-Type : 72 PLU key, 35 function key / P-Type : 72 PLU key, 36 function key, 144 PLU					
Display	LCD (Preset Tare : 5 digit, Weight : 6 digit, Unit Price : 7 digit, Total Price : 8 digit, PLU name: 12 digit)					
Printer	Speed 100 mm/sec					
Printing Resolution	202 dpi					
Label Size	Width : 40 mm ~ 60 mm / Length : 30 mm ~ 80 mm					
Barcode Type	UPC, EAN13, I20F5, CODE128					
Printer Type	Direct thermal print					
Operating Temp.	-10°C ~ 40°C (14°F ~ 104°F)					
Power	AC 100 ~ 240V 50/60Hz 1.5A					

Label Printing Scale

CL5000J-C 

General speed thermal printer

Cartridge-loading-type label installation

Free format label design

Wired/Wireless network

Up to 6,000 PLUs memory function



CL5000J-CB

CL5000J-CH

CL5000J-CR

CL5000J-CS

OPTION > Wireless LAN card > Dust protection cover > Stainless steel platter with back rail > Large platter > Fish tray



CL5000J-CP

Label Printing Scale
LP-1

54 preset keys for frequent transaction items

Easy programming with wide keyboard

Pre-pack mode for automatic weighing /labeling

4000PLUs

1000 Message

Free format label design

OPTION

TCP/IP LAN card > Pole display

> PC manager program(LP-Works)

> Stainless steel platter with back rail > Large platter

> Remote platform(60~150kg) (Non approval only)



B type



LP-1 R-type

LP-150(Non approval only)

Model	CL5000J-C			LP-1		
Max.capacity(kg)	3/6	6/15	15/30	3/6	6/15	15/30
Readability(g)	1/2	2/5	5/10	1/2	2/5	5/10
Resolution	1/3,000(Dual interval)					
Display type	LCD display + Dot matrix 80 LCD(60x80 dots)			VFD		
Printing speed(mm/sec)	75			80		
Label size(mm)	Width : 40 ~ 60, Length : 30 ~ 80			Width : 58, Length : 30~100		
Operating temperature(°C)	-10 ~ +40					
Power	AC 100 ~ 240V, 50/60Hz					
Platter size(mm) (W x D)	382 x 246			400 x 245		
Dimensions(mm) (W x D x H)	B: 408 x 432 x 173 / P: 408 x 493 x 607 R: 408 x 493 x 542 / H: 420 x 281 x 706 S: 408 x 493 x 703			B: 410 x 430 x 197 R: 410 x 483 x 585		
Product Weight (kg)	B: 10.5 / R: 12 /P: 11.2 / H: 12.2 / S: 15.1			B: 9.5 / R: 10.6		

Ticket Printing Scale

CT100



30 Direct PLUs

1000 Indirect

Rechargeable battery

Max 6 Floating vender function(with RS-485)

OPTION > Zigbee, Wireless ethernet interface > Platter PLU cover
> Platter back rail > PC software management(CT-Works)



CT100-B



CT100-P

Rear Display



Ticket Printing Scale

PR-T

Direct PLU 30EA, Indirect PLU 300

Rechargeable Battery

Inventory Function

Barcode, Image Print

Model	CT100			PR-T		
Max.capacity (kg)	3/6	6/15	15/30	6	15	32
Readability (g)	1/2	2/5	5/10	1	2	5
Resolution	1/3,000(Dual interval)			1/6,000	1/7,500	1/6,400
Display digit	12 digit (14 segment)			21 digit (7 segment)		
Display type	Alpha-numeric LCD + backlight			LED		
Operating temperature (°C)	-10 ~ +40			0 ~ +45		
Power	AC 230V(50 ~ 60Hz), AC + DC(Optional), Pb Battery 12V/7A			AC 220V, Pb Battery 6V/4A		
Platter size(mm) (W x D)	320 x 240			322x212		
Dimensions(mm) (W x D x H)	B : 342 x 455 x 152 / P : 342 x 455 x 415 R : 342 x 455 x 490			329.2 x 389.4 x 448		
Product Weight (kg)	B: 6.8 / P: 8 / R: 8.5			4		

Premium Price Computing Scale CP500



Long lasting lithium-ion battery operated remote display

Remote dual display

Environmentally friendly ceramic tray

Resistive overlay color, touch sensitive display

Wireless fidelity interface



Product Movie

Model	CP500	CD-1043F(Remote Display)
Max.capacity(kg)	6	-
Readability(g)	1	-
Resolution	1/6,000	-
Operation system	Linux	-
Display	4.3" TFT, LCD(480 x 272)	4.3" TFT, LCD(480 x 272)
Power	Adapter	Adapter, Rechargeable battery
Dimensions(mm)	261.2 x 259.9 x 83.1	127.6 x Ø99.4 x 177.3
Interface	WiFi, RF, USB(host), RS-232C	RF, USB(host)
Product Weight (kg)	2.4	0.4

Various design



Price Computing Scale

AP



200 PLUs with 28 direct keys

Daily total sales reporting function(Only EX type)

Simple and easy operation

Adopted dual interval technology

USB connection available

OPTION > Display on the rear center > RS-232C / USB interface
> Large platter > Dust protection cover > Printer: DEP-50/DLP-50



Large Platter

Model	AP				
Max.capacity (kg)	3/6	6/15	15/30	Operating temperature (°C)	-10 ~ +40
Readability (g)	1/2	2/5	5/10	Power	AC 100-220V, 50/60Hz
External resolution	1/3,000 (Dual interval)			Platter size (mm)	340(W) x 215(D)
Display digit	7/5/6 (Total price/Weight/Unit price)			Dimensions (mm)	435(W) x 325(D) x 495(H)
Display type	VFD			Product weight (kg)	6.5

Price Computing Scale

PR-II



High Resolution for Weighing

Low Profile Design

Up to 7 Direct PLUs Memory Function

LCD Display & Back light (White)

OPTION > RS-232 (Print, Command)
> Pole Type > Mn Battery > USB Port



Pole Type



Bench Type



User Display Type

Price Computing Scale

PR PLUS



Accumulation function

Simple and easy operation

OPTION > Dust protection cover
> Pole display



Pole Type



Bench Type

Model	PR-II				PR PLUS		
Max.capacity (kg)	3	6	15	30	3/6	6/15	15/30
Readability (g)	0.1/0.2/0.5 0.5/1 (Certi.)	0.2/0.5/1 0.5/1 (Certi.)	0.5/1/2 2/5 (Certi.)	1/2/5 5/10 (Certi.)	1/2	2/5	5/10
External resolution	1/3,000 Dual interval, Certi.(1/3,000-1/30,000)				1/3,000 (Dual interval, Certi.)		
Display digit	6/6/6 Digit & Back light (White)				5/5/6 (Weight/Unit price/Total price)		
Display type	LCD				LED		
Operating temperature (°C)	0 ~ +40				0 ~ +40		
Power	Mn (500 hr), PB (400hr), Mnt PB (900hr)				Rechargeable (30hrs), AC100-220V, 50-60Hz		
Platter Size (mm)	330(W) x 235(D)				322(W) x 212(D)		
Dimensions (mm)	330(W) x 380(D) x 105(H)				Standard Type : 335(W) x 336.1(D) x 103(H) Pole Type : 335(W) x 396.2(D) x 473.1(H)		
Product weight (kg)	3 (B Type), 3.5 (P Type)				3.5 (B Type), 3.8 (P Type)		

Price Computing Scale ER PLUS



ER PLUS-CB

5 direct PLUs with 200 indirect PLUs

Soft touch tact switch with silicon rubber keypad

Adopted dual interval technology for better accuracy

Various types of display (LCD, VFD, LED)

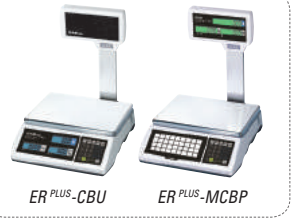
Rechargeable battery operation

Expanded PLU keys

Silicon rubber keypad



OPTION > DEP-50/DLP-50 > Large platter/fish tray
> Dust protection cover > Blue backlight (LCD only)
> RS-232C interface > Client - view pole display



ER PLUS-CBU

ER PLUS-MCBP

Price Computing Scale

ER JR



4 direct PLUs memory function

Adopted dual interval technology for better accuracy

Three high-legible LCD displays with blue backlight

Rechargeable battery operation

EMBO Keypad

OPTION > Client-view pole display
> Dust protection cover
> Dry Battery operation



ER JR-CBU



ER JR-CB

Model	ER PLUS			ER JR		
Max.capacity(kg)	3/6	6/15	15/30	3/6	6/15	15/30
Readability(g)	1/2	2/5	5/10	1/2	2/5	5/10
Resolution	1/3,000(Dual interval)					
Display digit	5/6/6(Weight/Unit Price/Total Price)					
Display type	LCD / LED / VFD			LCD		
Operating temperature(°C)	-10 ~ +40					
Power	Rechargeable battery, DC Adapter			Rechargeable, 12V DC Adapter		
Battery Life	200hrs(LCD) / 45Hrs(LED) / 6Hrs(VFD)			180hrs (without backlight)		
Platter size(mm) (W x D)	304 x 220			290 x 209		
Dimensions(mm) (W x D x H)	Standard Type : 330 x 346 x 107 Pole Type : 330 x 346 x 419			Standard type : 304 x 324 x 106 Pole type : 304 x 324 x 413		
Product Weight (kg)	Standard type: 4.5, Pole type: 5.8			Standard type: 3.5, Pole type: 4.8		

Price Computing Scale

HS



200 indirect PLUs

Daily total sales reporting function

Simple and easy ration

Model	HS		
Max.capacity (kg)	6	15	30
Readability (g)	2	5	10
External resolution	1/3,000		
Display digit	6/5/6, 7/5/6 (Total price/Weight/Unit price)		
Display type	VFD		
Operating temperature (°C)	-10 ~ +40		
Power	AC 100~220V, 50/60Hz		
Platter Size	Ø320		
Dimensions (mm)	260(W) x 110(D) x 368(H)		
Product weight (kg)	3.6		



Price Computing Scale



24 direct and 200 indirect PLUs

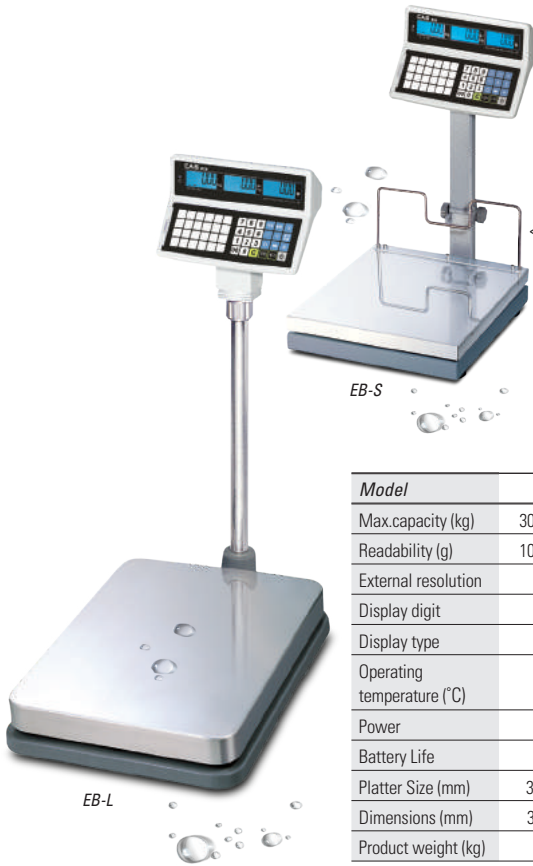
Dual interval

Rechargeable battery operated (6V, 4Ah)

Compact design & Easy-to-use

RS-232 Interface

OPTION > Back rail (only EB-S)
> Printer: DEP-50 (Ticket)/DLP-50 (Label) > Dust protection cover
> 6V,10Ah Rechargeable battery(only EB-S) *Approx.500hrs used



Model	EB-S		EB-L			
	Max.capacity (kg)	30/60	60/150	6/15	15/30	30/60
Readability (g)	10/20	20/50	2/5	5/10	10/20	20/50
External resolution	1/3,000 (Dual interval)					
Display digit	6/6/6(Weight/Unit price/Total price)					
Display type	LCD					
Operating temperature (°C)	-10 ~ +40					
Power	Rechargeable battery, DC Adapter					
Battery Life	Approx.200hrs (backlight off)					
Platter Size (mm)	350(W) x 400(D)		280(W) x 280(D)		400(W) x 520(D)	
Dimensions (mm)	350 x 470 x 584		280(W)x350(D) x530(H)		425(W) x675(D) x 755(H)	
Product weight (kg)	14.9		5.3		15.6	

Label

Hyper-small market, food industry label(low climate label)

Coating labels : PE, PP, oiled cotton paper, PET, etc.

Paper finished labels : Glossy paper, thermal paper, etc.



Meat Production, Industrial Barcode Label Printer Label

Coating labels : PE, PP, oiled cotton, PET, etc.

Paper finished labels : Glossy paper, thermal paper, etc.



Product Label Sticker

Coating labels : PE, PP, oiled cotton, PET, etc.

Paper finished labels : Glossy paper, thermal paper, etc.



Entry Ticket, Ribbon Type POS Receipt Ticket

Coating labels : PE, PP, oiled cotton paper, PET, etc.

Paper finished labels : Glossy paper, thermal paper, etc.





LABORATORY WEIGHING SOLUTION™

LABORATORY PRODUCTS

High precision weighing solution comprised of only products that have passed the stringent regulation tests and management.

Analytical Balance

CAT

Automated calibration can be started by pressing keys.

Unit weights of a sample can be easily entered, stored and recalled for use.

Compare samples to target values or pass/fail criteria clearly

Formulation Mode

% measurement

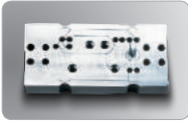
Power saving function

Password lock

OPTION

EP-100 Printer > EP-110 Printer > I/O-RS cable

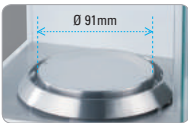
Protection Cover > USB conversion kit



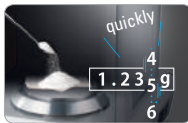
Applied UniBloc sensor for stable weighing



2.3sec response time



Ø 91mm large pan



One-touch easy setting



MODEL	CATX324	CATX224	CATX124	CATY324	CATY224	CATY124
Capacity	320g	220g	120g	320g	220g	120g
Number of verification scale interval	320000	220000	120000	320000	220000	120000
Scale interval (d)	0.0001g					
Range of use	0.01g-320g	0.01g-220g	0.01g-120g	0.01g-320g	0.01g-220g	0.01g-120g
Response time	Approx. 3.0 seconds					
Ambient operating temperature	10 ~ 30					
Pan size (mm)	Ø 91mm					
Main body dimensions (mm)	Approx. 210(W) x 340(D) x 325(H) mm					
Main body weight	CATX : Approx. 6.2 kg / CATY : Approx. 6.0 kg					
Display	LCD					
Rated electric power supply	DC 12V, 1A					
I/O terminal	DATA I/O					
Altitude	Up to 2000m					
Installation Site	device may only used indoors					
AC adapter (primary)	AC 100 ~ 240V, 400mA 50/60 Hz					

Analytical Balance CAU



- ▶ Display backlight
- ▶ Dual-range
- ▶ Excellent repeatability and zero-return
- ▶ Easy level adjustment
- ▶ Pouring mode / Formulation mode
- ▶ Date output style option

Model	Max.capacity (g)	Readability (mg)	Platter size (mm)
CAUW-D	120/42	0.1/0.01	Ø80
	220/82	0.1/0.01	Ø80
CAUW	320, 220, 120	0.1	Ø80
CAUX	320, 220, 120	0.1	Ø80
CAUY	220, 120	0.1	Ø80



Top-Loading Balance



- ▶ iM Works (PC software)
- ▶ Weigh-Below hook
- ▶ Analog bar graph display
- ▶ Backlight LCD
- ▶ GLP / GMP / ISO calibration record
- ▶ PSC Fully-automatic calibration (CUW-H only)
- ▶ Resolution 1/620,000
- ▶ Built-in clock
- ▶ Check weighing



Small tray >



Product Movie

Model	CUW-H, CUX-H, CUW-HV		CUW-S, CUX-S	
Max.capacity (g)	220, 420, 620	2200, 4200, 6200	420, 820	4200, 8200
Readability (g)	0.001	0.01	0.01	0.1
Pan size (mm) (W x D)	108 x 105	170 x 180	108 x 105	170 x 180

Precision Platform Balance CBX

Calibration report

Check weighing(HI/GO/LO)

Counting pieces

Built-in RS-232C interface

OPTION > Printer (EP-80) > Charging battery pack
> Specific gravity measurement kit > RS-232C cable



Model	CBX				
Max.capacity (kg)	CBX12KH	CBX22KH	CBX32KH	CBX32KS	CBX52KS
Readability (g)	0.1	0.1	0.1	1	1
Display type	LCD				
Operating temperature (°C)	+5~ +40				
Power	AC Adapter (12V/1A)				
Platter size (mm) (W x D)	345 x 250				
Dimensions (mm) (W x D x H)	360 x 355 x 125				
Product weight (kg)	10.5				

Top-Loading Balance CBL

Economic price for balance

Counting pieces and unit conversion

Accurate performance and strong durability

Analog bar graph display

OPTION > Printer (CP-7020) > Windbreak
> RS-232C Interface (IFB-102A)



< Windbreak
(Small Tray only)



Small Tray



For products with "*" mark, windbreak is a standard

Model	Max.capacity (g)	Readability (g)	Pan size (mm) (W x D)
CBL220H*	220	0.001	100 x 100
CBL320H*	320	0.001	100 x 100
CBL2200H	2,200	0.01	164 x 124
CBL3200H	3,200	0.01	164 x 124

Micro Weighing XE



Touchless key

Various Interfaces

Loadcell Protection Locker

Backlight Color Orange



Product Movie

Model	XE						
Max. capacity(g)	300	600	1500	3000	6000	Operation temperature	5 ~ 40°C
Readability(g)	0.005	0.01	0.02	0.05	0.1	Power	DC 12V(with adapter)
External resolution	1/6,000 (Certi.), 1/30,000 ~ 1/75,000					Platter size(mm)	150, 300, 600: Ø128mm 1500, 3000, 6000: 155 X 143mm
Weight Units	g, ct, lb, oz, GN, ozt, dwt					Dimensions(mm)	180(W) x 272(L) x 74(H)
Display digit	6 and half digits(Weight)					Product weight(kg)	1.39
Display type	LCD(with backlight)						

Remote Display CD-300

Distance Adjustable & Tiltable Display

Clear LCD

Compatible with Various Products

Model	CD-300		
Power	via RS232, 5V adapter	Communication Cable	length: 1.2m(With products)
External display	LCD(With BACKLIGHT)	Communication Methods	RS-232C
	Units, 7digit, mg	Dimensions(mm)	141(W) x 66(D) x 90(H)
Protocol	CAS 22byte Protocol	Product weight(kg)	0.25



Micro Weighing MW-IN

High accuracy and easy operation

Parts counting/weighing conversion mode

Soft touch tact switch

Auto span adjustment & Auto zero tracking

Model	MW-IN			
Max.capacity(g)	200	2000	Operating temperature (°C)	+5 ~ +35
Readability(g)	0.01	0.1	Power	220V, DC9V(300mA)
External resolution	1/20,000		Platter size (mm)	Ø110 Ø150
Display digit	6 digits (Weight)		Dimensions (mm) (W x D x H)	184 x 237 x 80
Display type	LED		Product weight (kg)	1.25





Individual Weights

- ◆ Sheet weight
- ◆ Marked sheet weight
- ◆ Cylindrical weight with knob
- ◆ Marked cylindrical weight with knob

Nominal value	Order NO.		
	E2	F1	F2
1mg	CE21111	CF11111	CF21111
2mg	CE21112	CF11112	CF21112
5mg	CE21113	CF11113	CF21113
10mg	CE21114	CF11114	CF21114
20mg	CE21115	CF11115	CF21115
50mg	CE21116	CF11116	CF21116
100mg	CE21117	CF11117	CF21117
200mg	CE21118	CF11118	CF21118
500mg	CE21119	CF11119	CF21119
1g	CE21120	CF11120	CF21120
2g	CE21121	CF11121	CF21121
5g	CE21122	CF11122	CF21122
10g	CE21123	CF11123	CF21123
20g	CE21124	CF11124	CF21124
50g	CE21125	CF11125	CF21125
100g	CE21126	CF11126	CF21126
200g	CE21127	CF11127	CF21127
500g	CE21128	CF11128	CF21128
1kg	CE21129	CF11129	CF21129
2kg	CE21130	CF11130	CF21130
5kg	CE21131	CF11131	CF21131
10kg	CE21132	CF11132	CF21132
20kg	CE21133	CF11133	CF21133

Nominal value	Shape
1mg	◆
2mg	◆◆
5mg	◆
10mg	◆
20mg	◆◆
50mg	◆
100mg	◆
200mg	◆◆
500mg	◆
1g	◆
2g	◆◆
5g	◆
10g	◆
20g	◆◆
50g	◆
100g	◆
200g	◆◆
500g	◆
1kg	◆
2kg	◆◆
5kg	◆
10kg	◆
20kg	◆



Weight Sets F1/F2/E2

Model	CME2 -100G	CME2 -200G	CME2 -1K	CME2 -2K	CME2 -5K	CME2 -10K	CME2 -20K
Nominal Value	1mg ~100g	1mg ~200g	1mg ~1kg	1mg ~2kg	1mg ~5kg	10kg	20kg
1mg	🏠	🏠	🏠	🏠	🏠		
2mg	🏠🏠	🏠🏠	🏠🏠	🏠🏠	🏠🏠		
5mg	🏠	🏠	🏠	🏠	🏠		
10mg	🏠	🏠	🏠	🏠	🏠		
20mg	🏠🏠	🏠🏠	🏠🏠	🏠🏠	🏠🏠		
50mg	🏠	🏠	🏠	🏠	🏠		
100mg	🏠	🏠	🏠	🏠	🏠		
200mg	🏠🏠	🏠🏠	🏠🏠	🏠🏠	🏠🏠		
500mg	🏠	🏠	🏠	🏠	🏠		
1g	🏠	🏠	🏠	🏠	🏠		
2g	🏠🏠	🏠🏠	🏠🏠	🏠🏠	🏠🏠		
5g	🏠	🏠	🏠	🏠	🏠		
10g	🏠	🏠	🏠	🏠	🏠		
20g	🏠🏠	🏠🏠	🏠🏠	🏠🏠	🏠🏠		
50g	🏠	🏠	🏠	🏠	🏠		
100g	🏠	🏠	🏠	🏠	🏠		
200g		🏠🏠	🏠🏠	🏠🏠	🏠🏠		
500g			🏠	🏠	🏠		
1kg			🏠	🏠	🏠		
2kg				🏠🏠	🏠🏠		
5kg					🏠		
10kg						🏠	
20kg							🏠
Internal	21 pcs	23 pcs	25 pcs	27 pcs	28 pcs	1 pcs	1 pcs

Model	CMF1 -100G	CMF1 -200G	CMF1 -1K	CMF1 -2K	CMF1 -5K	CMF1 -10K	CMF1 -20K
Nominal Value	1mg ~100g	1mg ~200g	1mg ~1kg	1mg ~2kg	1mg ~5kg	10kg	20kg
1mg	🏠	🏠	🏠	🏠	🏠		
2mg	🏠🏠	🏠🏠	🏠🏠	🏠🏠	🏠🏠		
5mg	🏠	🏠	🏠	🏠	🏠		
10mg	🏠	🏠	🏠	🏠	🏠		
20mg	🏠🏠	🏠🏠	🏠🏠	🏠🏠	🏠🏠		
50mg	🏠	🏠	🏠	🏠	🏠		
100mg	🏠	🏠	🏠	🏠	🏠		
200mg	🏠🏠	🏠🏠	🏠🏠	🏠🏠	🏠🏠		
500mg	🏠	🏠	🏠	🏠	🏠		
1g	🏠	🏠	🏠	🏠	🏠		
2g	🏠🏠	🏠🏠	🏠🏠	🏠🏠	🏠🏠		
5g	🏠	🏠	🏠	🏠	🏠		
10g	🏠	🏠	🏠	🏠	🏠		
20g	🏠🏠	🏠🏠	🏠🏠	🏠🏠	🏠🏠		
50g	🏠	🏠	🏠	🏠	🏠		
100g	🏠	🏠	🏠	🏠	🏠		
200g		🏠🏠	🏠🏠	🏠🏠	🏠🏠		
500g			🏠	🏠	🏠		
1kg			🏠	🏠	🏠		
2kg				🏠🏠	🏠🏠		
5kg					🏠		
10kg						🏠	
20kg							🏠
Internal	21 pcs	23 pcs	25 pcs	27 pcs	28 pcs	1 pcs	1 pcs

Model	CMF2 -100G	CMF2 -200G	CMF2 -1K	CMF2 -2K	CMF2 -5K	CMF2 -10K	CMF2 -20K
Nominal Value	1mg ~100g	1mg ~200g	1mg ~1kg	1mg ~2kg	1mg ~5kg	10kg	20kg
1mg	🏠	🏠	🏠	🏠	🏠		
2mg	🏠🏠	🏠🏠	🏠🏠	🏠🏠	🏠🏠		
5mg	🏠	🏠	🏠	🏠	🏠		
10mg	🏠	🏠	🏠	🏠	🏠		
20mg	🏠🏠	🏠🏠	🏠🏠	🏠🏠	🏠🏠		
50mg	🏠	🏠	🏠	🏠	🏠		
100mg	🏠	🏠	🏠	🏠	🏠		
200mg	🏠🏠	🏠🏠	🏠🏠	🏠🏠	🏠🏠		
500mg	🏠	🏠	🏠	🏠	🏠		
1g	🏠	🏠	🏠	🏠	🏠		
2g	🏠🏠	🏠🏠	🏠🏠	🏠🏠	🏠🏠		
5g	🏠	🏠	🏠	🏠	🏠		
10g	🏠	🏠	🏠	🏠	🏠		
20g	🏠🏠	🏠🏠	🏠🏠	🏠🏠	🏠🏠		
50g	🏠	🏠	🏠	🏠	🏠		
100g	🏠	🏠	🏠	🏠	🏠		
200g		🏠🏠	🏠🏠	🏠🏠	🏠🏠		
500g			🏠	🏠	🏠		
1kg			🏠	🏠	🏠		
2kg				🏠🏠	🏠🏠		
5kg					🏠		
10kg						🏠	
20kg							🏠
Internal	21 pcs	23 pcs	25 pcs	27 pcs	28 pcs	1 pcs	1 pcs



INDUSTRIAL WEIGHING SOLUTION™

INDUSTRIAL PRODUCTS

Industrial solution that prides in strong durability and outstanding precision which can be used in rough industrial environments.

Basic Scale

SW-II



High Resolution for Weighing

Rechargeable Battery (Max. 1,000hours : Mn & PB)

Low Profile Design

USB Port for COMM. & Power

Easy Grab Body

Customized External Color

OPTION > RS-232(Print, Command)
 > Rear display > Rechargeable Battery And Adaptor
 > USB Port > SUS Tray



Rear Display



Model	SW-II			
Max.capacity (kg)	3	6	15	30
Readability (g)	0.1, 0.2, 0.5	0.2, 0.5, 1	0.5, 1, 2	1, 2, 5
Readability (g, Certi.)	0.5/1	1/2	2/5	5/10
Resolution	1/3,000 Dual Interval, Certi.(1/3,000~1/30,000)			
Display	6 digits LCD(115 x 39.5mm) & Backlight(white)			
Symbols	STABLE, ZERO, TARE, g, kg, lb, oz, PCS, Low Battery HI / OK / LO & PCS			
Functions	Hold, Unit Conversion Counting-Counting Sample Range: 10 ~ 100, 200, 300, 400, 500 Weight Comparison Function: HI, OK, Low Sleep Mode Function			
Operation Time	Approx. D size Battery: 500hr or Pb Battery: 450hr (Backlight off) Working hours on simultaneous use of Mn & Pb Battery: 1,000hr			
Power	Mn(500hr), PB(500hr), Mn+PB(1000hr)			
Dimensions (mm) (W x D x H)	245(W) x 280(D) x 110(H)			
Platter Size (mm) (W x D)	225(W) x 190(D)			

Basic Scale AD-USB

Easy operation

Soft touch tact switch

OPTION > Printer: DEP-50 (Ticket)/DLP-50 (Label)
> RS-232C interface > USB communication (with power)
> Baby tray > Large platter



Basic Scale ED/ED-H



Easy to operate

Soft large tact switch

Rechargeable battery operation

Accumulation mode (Σ)

Counting, percentage weighing function

Double platters (Plastic + stainless steel)

12V DC Adapter

OPTION > Printer: DEP-50 (Ticket)/DLP-50 (Label)
> BD-DT-4(4" Label)

Model	AD-USB								ED				ED-H			
Max.capacity (kg)	3	5	6	10	15	20	25	30	1.5/3	3/6	6/15	15/30	3	6	15	30
Readability (g)	1	1	2	2	5	0.2	0.5	10	0.5/1	1/2	2/5	5/10	0.1	0.2	0.5	1
Resolution	1/3,000	1/3,000 ~ 1/5,000		1/5,000 ~ 1/10,000	1/3,000	1/10,000	1/5,000	1/3,000	1/3,000 (Dual interval)				1/30,000			
Display digit	6 digits								6 digits							
Display type	LCD (green backlight)								LCD (blue backlight)							
Option	Rechargeable battery And Adapter								Rechargeable battery or DC Adapter							
Power	USB Power Or Pb battery 4V 4Ah or 6V Adapter								200hrs (Backlight off)							
Platter Size (mm)	340(W) x 215(D)								306(W) x 222(D)							
Dimensions (mm)	350(W) x 325(D) x 105(H)								330(W) x 346(D) x 107(H)							
Product weight (kg)	4.7								4.5							



Product Movie

Waterproof Scale FW500



IP69k (Waterproof)

Large stainless steel tray

Fast and accurate weighing operation

Bright and large display & Rear display

Auto power off



FW500(LED)



FW500(LCD)

OPTION > AC adaptor (Only FW500-C) > Rear display

Model	FW500-C			FW500-E		
Capacity (kg)	3/6	6/15	15/30	3/6	6/15	15/30
Repeatability (g)	1/2	2/5	5/10	1/2	2/5	5/10
Resolution	1/3,000 (Dual Interval)					
Display type	LCD			LED		
Display	5 digit (height 35mm)			6 digit (height 19mm)		
Status	Stable, Zero, Tare, Unit(kg), BAT					
Key	Zero, Tare, Hold, Power					
Function	Hold, Auto power off					
Power	Dry battery (D size 1.5V x 4ea) 12V/1.5A Adaptor			6V Rechargeable battery 12V/1.5A Adaptor		
Battery life	Manganese dry battery : About 1,200 hours Alkaline dry battery : About 2,500 hours *for single display			Rechargeable battery : About 100 hours *for single display		
Operation Temperature (°C)	-10 ~ +40					
Tray Size (mm)	247(W) x 212(D)					
Dimension (mm)	266(W) x 303(D) x 109(H)					
Product weight (kg)	3.0			3.3		

Basic Scale SH



Load cell lock function

Possible to stack in storage without shipping

Over/under load indicator operated

Battery or AC adapter operation

Auto power-off feature conserve energy

Basic Scale PW-II



Stainless steel body case

Easy Operation

Various weight units are convertible(g, kg, lb, oz)

AC Adapter (9V / 300mA)

Model	SH			PW-II		
Max.capacity (g)	200	2,000	5,000	1/2	2.5/5	4/10
Readability (g)	0.1	1	2	0.5/1	1/2	2/5
Resolution	1/2,000		1/2,500	1/2,000~1/2,500 (Dual interval)		
Weighing units	g, oz	g, lb : oz t, dw t				
Display digit	6 digits (Weight)			5 digits		
Display type	LCD			LCD		
Operating temperature (°C)	-18 ~ +25			-10 ~ +40		
Power	3 AA batteries			Dry battery (AA x 6ea) or 9V DC Adapter		
Battery life	300hrs			Alkaline : 250 hrs, Mn: 60 hrs		
Platter Size (mm)	Ø130/Pan Size: 120			222(W) x 151(D)		
Dimensions (mm)	145(W) x 45(H) x 205(D)			239(W) x 227(D) x 66(H)		
Product weight (kg)	0.4			1.5		

Pocket Scale RE



Convenient Pocket-Size

Unique hand-held design

Simple and easy operation

Touch screen (RE 200/500)

Blue backlight (RE 200/500)

High resolution



RE-260

RE-200/500

Model	RE-260		RE-200	RE-500
Max.capacity (g)	250	500	200	500
Readability (g)	0.05	0.1	0.05	0.1
External resolution	1/5,000		1/4,000	1/5,000
Display digit	LCD			
Operating temperature (°C)	-5 ~ +35			
Power	AAA x 3EA, DC 4.5 V		AAA x 2EA	
Platter Size (mm)	63 x 72		60 x 60	
Dimensions (mm)	150(W) x 75(D) x 32(H)		115(W) x 72(D) x 18(H)	
Product weight (kg)	0.16		0.13	

Scanner-Ready Scale PDS

Stainless-steel body

Semipermanent structure

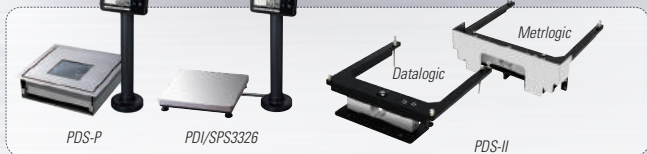
Easy to read LED display

Auto zero tracking

Made of couple of loadcells for high accuracy



PDI
Product Movie



PDS-P

PDI/SPS3326

PDS-II

Model	PDS / PDS-P		PDI/SPS3326	PDS-II	
				Datalogic	Metrlogic
Max.capacity (kg)	15	30		15	
Readability (g)			1/3,000		
Display digit			6 digits		
Display type	LED(PDS) / LCD(PDS-P)		LCD		
Operating temperature (°C)			-10 ~ +40		
Power			AC 100 ~ 240V		
Platter Size (mm) (W x D)	299 x 299		330 x 264	254 x 240	285 x 262
Dimensions (mm) (W x D x H)	348(W) x 348(D) x 121.2(H)		330 x 264 x 55.3 (340 x 277 x 55.3)	245 x 257 x 61.3	285 x 261.8 x 98
Product weight (kg)	10		5.87	2.6	3.6
Available Scanner	Metrlogic(Honeywell) - MS7620 Horizonm, MS 860 Datalogic - Magellan 2300 HS Motorola - symbol LS7808		-	Magellan8400	MS2400 Stratos

ECR Interface Scale PD-II



Adjustable display head

Easy-to-read VFD display

Communication ports: RS-232C or ECR interface

Low profile

OPTION > Remote pole display: PDR-II (S) > Dual display
> Interface cables to ECR > Black body



Built-in Standard



Black Body

Model	PD-II			
Max.capacity (kg)	Single	6	15	30
	Dual	3/6	6/15	15/30
Readability (g)	Single	2	5	10
	Dual	1/2	2/5	5/10
External resolution	1/3,000 (Single or Dual interval)			
Display digit	6 digits			
Display type	VFD			
Operating temperature (°C)	-10 ~ +40			
Power	AC 100~220V, 50/60Hz			
Platter Size	380(W) x 280(D)			
Dimensions (mm)	380(W) x 280(D) x 79(H)			
Product weight (kg)	6.7			

POS Platform Scale PDC

Interface to most POS system with RS-232C & USB-B type port

Various product type : Platform type, Single display type, Dual display type

Low Profile Design

Wide platform : 370 x 270mm

OPTION > USB cable, RS-232C cable, Bluetooth Communication



Platform Model (PDC)



Single Display Model (PDC-S)



Dual Display Model (PDC-D)

Model	PDC / PDC-S / PDC-D					
Capacity	Dual Interval	Single Interval	Dual Interval	Single Interval	Dual Interval	Single Interval
	Max 3/6kg	Max 6kg	Max 6/15kg	Max 15kg	Max 15/30kg	Max 30kg
Readability(e)	e=1/2g	e=2g	e=2/5g	e=5g	e=5/10g	e=10g
External Resolution	Dual 1/3000	1/3000	Dual 1/3000	1/3000	Dual 1/3000	1/3000
MAX Tare	-2.999kg	-5.998kg	-5.998kg	-14.995kg	-14.995kg	-29.990kg
Display & keys	PDC : None PDC-S : 57.5 x 24.8 [mm] 6 digit LCD display / Zero & Tare keys PDC-D : 57.5 x 24.8 [mm] 6 digit LCD display x 2ea / Zero & Tare keys					
Operating Temperature	-10 °C ~ +40 °C / 14 °F ~ 104 °F					
Interface	USB B type, RS-232C					
Power	D.C 6V 0.5A Adapter , USB 5V					
Product Size	PDC: 370 (W) x 270 (D) x 68.3 (H)mm / PDC-S: 370 (W) x 312.3 (D) x 68.3 (H)mm / PDC-D : 370 (W) x 364 (D) x 68.3 (H)mm					
Platter Size	370 (W) x 270 (D)mm					
Product Weight	PDC: 5.0kg / PDC-S: 5.1kg / PDC-D : 5.2kg					
Option	USB cable, RS-232C cable, Bluetooth Communication					



Counting Scale



EC

RS-232C interface(connection with PC or Printers)

Memory function (weight 200 units)

Weight comparison function

Double tray (Plastic + Stainless steel tray)

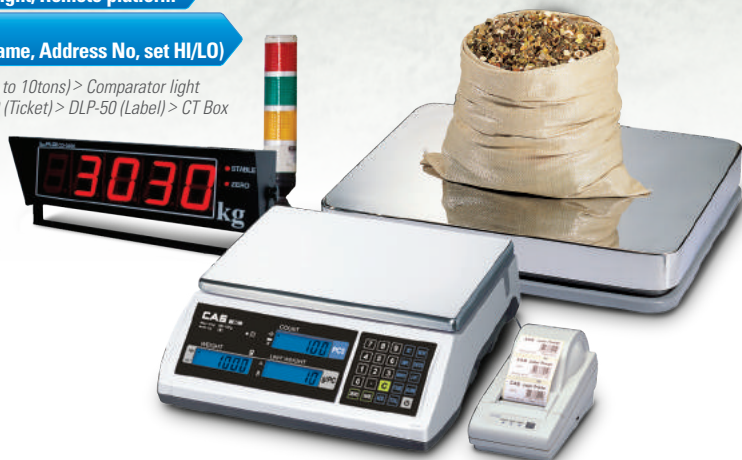
OPTION > Printer : DEP-50 (ticket)/DLP-50 (label)

Counting Scale EC-II Series

1/600,000 high internal resolution for accurate counting

Weight/count comparison function with alarm beeps

Accumulation mode(Σ) Remote platform (up to 15tons)

Various external devices : Ticket/Label printer,
Aux.display comparator light, Remote platform100ea memory
(Unit weight, tare, item name, Address No, set HI/LO)OPTION > Remote platform (up to 10tons) > Comparator light
> Aux. display > Printer: DEP-50 (Ticket) > DLP-50 (Label) > CT Box

Model	EC		EC-II	
Max.capacity (kg)	3	6	15	30
Readability (g)	0.1	0.2	0.5	1
Resolution	1/30,000		1/30,000 (non approval)	
Display digit	6/6/6(Weight/Unit weight/Count)			
Display type	LCD(blue backlight)			
Operating temperature (°C)	0 ~ +40			
Power	Rechargeable battery (6V, 5Ah) , DC adapter (DC 12V/1A)			
Platter Size (mm) (W x D)	306 x 222			
Dimensions (mm) (W x D x H)	330 x 346 x 107			
Product weight (kg)	4.5			



Counting Scale PR-C

Rechargeable Battery

Check weighing function

High weighing performance

OPTION > Printer: DEP-50 (ticket)/DLP-50 (label)

Counting Scale CS CE

Auto span adjustment

Auto zero tracking

Large stainless-steel platter

OPTION > RS-232C Interface



Model	PR-C				CS			
	Max.capacity (kg)	30	75	150	250	2.5	5	10
Readability (g)	2	5	10	20	0.5	1	2	5
Resolution	1/15,000			1/12,500	1/5,000			
Display digit	6/6/6(Weight/Unit weight/Count)				5/5/5(Weight/Unit weight/Count)			
Display type	LCD(blue backlight)				VFD			
Operating temperature (°C)	0 ~ +40				-10 ~ +40			
Power	Rechargeable battery (6V, 5Ah), DC adapter DC 12V/850mA				AC 100~220V, 50/60Hz			
Platter size (mm) (W x D)	400 x 500				340 x 215			
Dimensions (mm) (W x D x H)	500 x 720 x 760				350 x 325 x 105			
Product weight (kg)	16.5				5.3			

Counting Bench Scale ECB

1/600,000 high internal resolution for accurate counting

Weight/count comparison function with alarm beeps

Accumulation Mode (Σ)

Pivot/Tilt indicator

All embossing keys (total 48 ea)

124 ea memory (Direct 24ea, indirect 100 ea)

OPTION > Printer: DEP-50 (ticket)/DLP-50 (label)



Counting Bench Scale AC CE

Counting function

Pivoting indicator head

Die-casting platform

Auto-span adjustment

Easy-to-read VFD display

Stainless-steel weighing platform



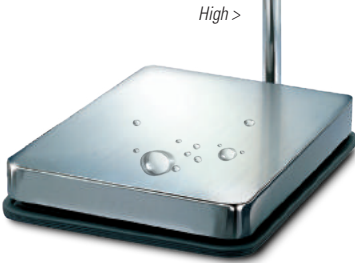
Model	ECB				AC		
	30	75	150	250	25	50	100
Max.capacity (kg)	30	75	150	250	25	50	100
Readability (g)	2	5	10	20	5	10	20
Resolution	1/15,000			1/12,500	1/5,000		
Display digit	6/6/6 (Weight/Unit weight/Count)				5/5/5 (Weight/Unit weight/Count)		
Display type	LCD(blue backlight)				VFD		
Operating temperature (°C)	0 ~ +40				-5 ~ +35		
Power	Rechargeable battery (6V, 5Ah), DC adapter DC 12V/850mA				AC 100-220V, 50/60Hz		
Platter Size (mm)	400(W) x 500(D)				390(W) x 510(D)		
Dimensions (mm)	500(W) x 720(D) x 760(H)				420(W) x 610(D) x 852(H)		
Product weight (kg)	16.5				19		



Portable Bench Scale PB



- Easy-to-carry portable type
- Dividing LCD display and body White backlight
- Battery operating up to 300 hours of continuous use
- Auto power-off function
- Auto zero tracking
- Rechargeable battery
- RS-232C interface



CE Bench Scale BW-1N

- Environmentally sealed (IP65)
- Tilt (90°) and swivel (360°) head
- Weight comparison function
- Counting function

OPTION > Backlight
 > Rechargeable battery pack with adapter
 > Wall-mount till bracket
 > Printer: DEP-50 (ticket)

Model	PB				BW-1N				
Max.capacity (kg)	15/30	30/60	60/150	100/200	6	15	30	60	150
Readability (g)	5/10	10/20	20/50	50/100	2	5	10	20	50
Resolution	1/3,000(Dual interval)		1/2,000 (Dual interval)		1/3,000				
Display digit	6 digits				5 digits (Weight)				
Display type	LCD				LCD(backlight)				
Operating temperature (°C)	-10 ~ +40				-10 ~ +40				
Power	Rechargeable battery / Adapter (12V/1.25 A)				Dry battery, Rechargeable, Adapter				
Platter Size (mm) (W x D)	355 x 443				280 x 280		420 x 520		
Dimensions (mm) (W x D x H)	355 x 611 x 65				280 x 350 x 530		425 x 675 x 755		
Product weight (kg)	6.2				5.3		17.4		

Bench Scale CWP

Stainless steel IP67 indicator & IP 67 loadcell

Highly-legible display

Built-in rechargeable battery

Adjustable display

Robust design

Indicator Angle control

OPTION > LED display



Product Movie

Bench Scale CK200SC

All stainless steel bench scale

Stainless steel Load Cell & IP67 indicator

High visibility LED display

RS-232C interface

< Bright comparator light
> Yellow, Green, Red(option)

LCD display >
(option)



OPTION > RS-422/RS-485 interface
> Printer: DEP-50 (ticket), DLP-50 (label)
> Bright comparator light - Yellow, Green, Red
(only for CK200SC) > LCD display

Model	CWP-150S-E	CWP-150S-E	CWP-60S-C	CWP-150S-C	CK200SC				
Max.capacity (kg)	30/60	60/150	30/60	60/150	6	15	30	60	150
Readability (g)	10/20	20/50	10/20	20/50	2	5	10	20	50
Resolution	1/3,000(Dual interval)				1/3,000 (Single)				
Display type	LED		LCD		7-Segment 6digit LED 13(W) x 20(H) LED bar for weight comparison				
Display digit	6 digits (7-Segment)		6 digits		STABLE, ZERO, TARE, G/N, BAT, HOLD, COM, kg/lb, UNDER, OK, OVER				
Sign for status	ZERO, TARE, GROSS, NET, STABLE, HOLD, UNIT				-				
Operating temperature (°C)	-10 ~ +40				-10 ~ +40				
Power	DC Adapter / Rechargeable battery				DC Adapter / Rechargeable battery				
Key	10 Numeric Key, 5 Function Key				10 Numeric keys & 5 Function keys				
Battery Life	30 hours		180 hours (When the backlight off)		Approx. 30 hours				
Charging time	12 hours				12 hours				
Platter Size (mm) (W x D)	400 x 520				280 x 280		400 x 520		
Dimensions (mm) (W x D x H)	415 x 652 x 758				293 x 363 x 510		400 x 610 x 778		
Product weight (kg)	15				8.8		20.5		

Bench Scale DB-II



Tilt (90°C) and swivel (360°C) head

Aluminum die casting platform

RS-232C interface

Counting function

Rechargeable Battery



OPTION > Printer: DEP-50 (ticket)

> Wall-mount stand

> Wall mount tilt bracket > Backlight (LCD type)

> Load cell cable 3 meter (W type)

> LED display > VFD display



Bench Scale

DB Basic



Tilt(90°) and swivel(360°) head

Aluminum die casting platform

RS-232C Interface

Counting function

OPTION > Printer: DEP-50(ticket)

> Wall-mount > Backlight > Dust cover

Model	DB-II							DB Basic						
	3/6		6/15		15/30		30/60		30/60		30/60		30/60	
Max.capacity (kg)	3/6	6/15	15/30	30/60	60/150	30/60	60/150	30/60	60/150	30/60	60/150	30/60	60/150	150/300
Readability (g)	1/2	2/5	5/10	10/20	20/50	10/20	20/50	10/20	20/50	10/20	20/50	10/20	20/50	50/100
Resolution	1/3,000(Dual interval)							1/3,000(Dual interval)						
Display digit	6 digits (Weight)							6 digits (Weight)						
Display type	LCD (LED)				VFD			LCD						
Operating temperature (°C)	-10 ~ +40							-10 ~ +40						
Power	DC Adapter				100~220V 50/60Hz			DC Adapter 9V/850mA 6V 3.3Ah 20hr Pb Battery						
Platter size (mm) (W x D)	280 x 280		420 x 510					360 x 460		460 x 570				
Dimensions (mm) (W x D x H)	280 x 350 x 530		425 x 675 x 755					360 x 580 x 765		460 x 690 x 765				
Product weight (kg)	5		14.7		14			14.7		20				

Bench Scale DB-1H



Solid built frame & soft touch tact switch

Die-casting large platform

Pivot type indicator

Rigid design for versatile uses

Auto zero tracking

OPTION > RS-232C interface



Bench Scale HD

High-Resolution Weighing

Counting & Percent mode Support

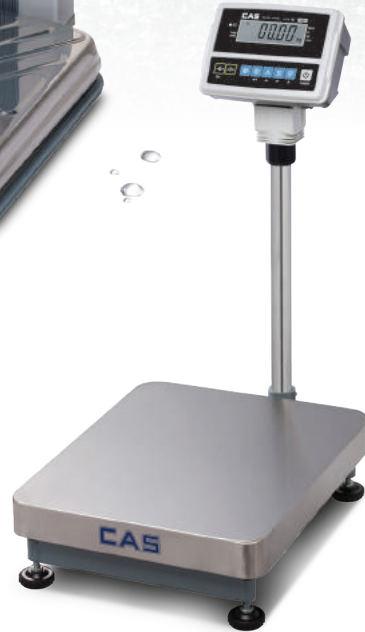
Check- Weighing function(HI/OK/LO display)

Easy operation with 9 function Keys

Rechargeable Battery(80 hours Continuous Use)

Serial Interface – RS232 Option

OPTION > RS-232(PC Communication / Receipt Printer)



Model	DB-1H				HD	
Max.capacity(kg)	15/30	30/60	60/150	100/200 (non approval)	150	300
Repeatability(g)	5/10	10/20	20/50	50/100	50, 10	100, 20
Resolution	1/3,000 (Dual)			1/2,000 (Dual)	1/3,000 ~ 1/15,000	
Display digit	5 digits				6 digits	
Display Type	VFD				LCD	
Operating temperature (°C)	-10 ~ +40				0 ~ +40	
Power	AC 100~220V, 50/60 HZ				AC Adapter 12V/800mA Internal Rechargeable sealed acid battery	
Platter Size(mm) (W x D)	400 x 520				400 x 500	
Dimensions(mm) (W x D x H)	420 x 635 x 765				400 x 630 x 750	
Product weight (kg)	19				15	

Bench Scale DL-N

Battery operating

AC adapter included

Easy-to-read LCD display

Auto-span adjustment

Auto zero tracking



Dry Battery: C size
It is available to use anywhere
by using dry battery.

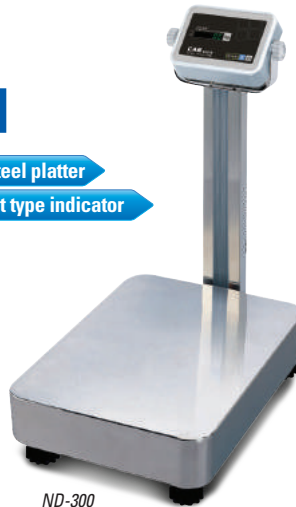


Bench Scale ND-300/300H

Die-casting platform & Stainless-steel platter

Rigid design for versatile uses Pivot type indicator

Solid built frame



Model	DL-N				ND-300/300H
Max.capacity (kg)	60	100	150	200	300
Readability (g)	20	50	50	100	100
Resolution	1/3,000	1/2,000	1/3,000	1/2,000	1/3,000
Display digit	5 digits (Weight)				5 digits (Weight)
Display type	LCD				VFD
Operating temperature (°C)	-10 ~ +40				-10 ~ +40
Power	DC 9V (1.5V x 6ea) /DC adapter				AC100~220V, 50/60Hz
Platter Size (mm)	400(W) x 520(D)				480(W) x 640(D)
Dimensions (mm)	420(W) x 635(D) x 730(H)				460(W) x 762(D) x 840(H)
Product weight (kg)	16				19

Bench Scale DBI/SPS

Large LCD display with backlight (20mm)

Counting & percentage mode - Only DBI LCD

Accumulation mode (Σ)

Weight comparison (HI/LOW/OK) - Only DBI LCD

RS-232C interface Ticket print-out (DEP-50)

Rechargeable battery (Approx. 100 hours)

Various sizes & capacities Stainless steel dust cover

Strong and light packing with hardboard

OPTION > Wall mount stand > Wall mount tilt bracket > Back rail
Printer: DEP-50 > LED display



Wall Mount Stand



Wall Mount Tilt Bracket



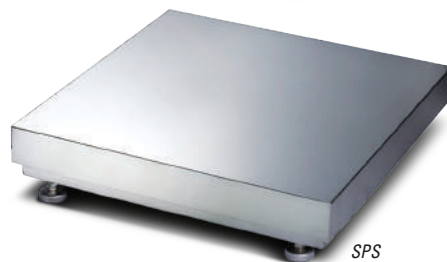
Back Rail



Print Connection



DBI



SPS

Model	DBI/SPS Series		
Max.capacity (kg)	60/150 (SPS5060 only)	150/300	300/600
Readability (g)	20/50	50/100	100/200
Resolution	1/3,000 (Dual interval)		
Display digit	6/6/6 (Weight/Unit price/Total price)		
Display type	LCD (LED)		
Operating temperature (°C)	-10 ~ +40		
Power	Rechargeable battery, 12V Adapter		
Battery Life	Approx.200hrs (backlight off)		
Dimension (mm)(W x D x H)	SPS5060 - 500x600x141/ SPS6070 - 600x700x165 SPS7080 - 700x800x165/ SPS8090 - 800x900x165		
Back Rail(mm)(W x D)	SPS5060- 270 x 450, SPS6070- 400 x 550 SPS7080 & SPS8090- 520 X 650		
Product weight (kg)	SPS5060- 22.5, SPS6070- 31.5, SPS7080- 39.7, SPS8090- 46.8		

Floor Scale HFS



Model	Max. capacity (kg)	Readability (kg)	Dimensions (mm) (W x D x H)
0.5HFS	500	0.2	1,000 x 1,000 x 90
0.5HFS	1,000	0.5	800 x 800 x 90
1HFS	1,000	0.5	1,000 x 800 x 90
1HFS	1,000	0.5	1,000 x 1,000 x 90
1HFS	1,000	0.5	1,000 x 1,200 x 90
1HFS	1,000	0.5	1,100 x 1,100 x 90
1HFS	1,000	0.5	1,200 x 1,200 x 90
1HFS	1,000	0.5	1,200 x 1,500 x 90
2HFS	2,000	1	1,200 x 1,200 x 90
2HFS	2,000	1	1,200 x 1,500 x 90
2HFS	2,000	1	1,500 x 1,500 x 90
3HFS	3,000	1	1,200 x 1,200 x 90
3HFS	3,000	1	1,200 x 1,500 x 90
3HFS	3,000	1	1,500 x 1,500 x 90
3HFS	3,000	1	1,500 x 1,800 x 90
3HFS	3,000	1	1,500 x 2,000 x 90
5HFS	5,000	2	1,500 x 1,500 x 90
5HFS	5,000	2	1,500 x 1,800 x 90
5HFS	5,000	2	1,500 x 2,000 x 90

- Rugged construction and heavy-duty weighing plate**
- Protected load cell wire by flexible cable**
- Adjustable and swivel feet**
- High quality powder coating**

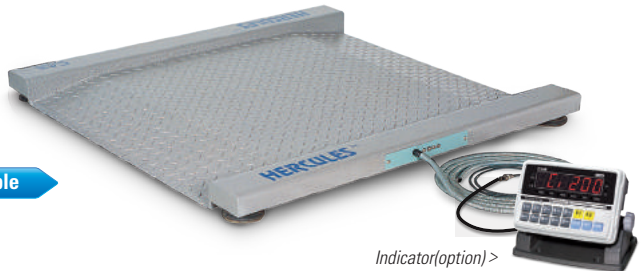
OPTION > *Stainless steel construction* > *Access ramps* > *Pit frames* > *Indicator stand*



Roll-on Scale ROLL-ON

- Rugged structure and low profile**
- Heavy-duty weighing plate**
- Protected load cell wire by flexible cable**
- Adjustable and swivel feet**
- High quality powder coating**

OPTION > *Indicator, Indicator stand*



Model	R-300	R-500	R-1000
Max.capacity (kg)	300	500	1,000
Readability (kg)	0.1	0.2	0.5
Resolution	1,000(W) x 1,000(D) x 90(H)		

Wheelchair Scale WCS

1/4,000 high resolution

High-legible LCD display (25mm)

Slip type for each roll-on

Fixable feet

Application: hospital

OPTION > Printing function

Model	WCS-200
Max.capacity (kg)	200
Readability (kg)	0.05
Power	AC 220V
Platter Size (mm) (WxD)	800 x 800
Dimensions (mm) (W x D x H)	1,000 x 1,000 x 1,120
Height of display Head (mm)	40



U Scale UFS

Heavy-duty body

High quality powder coating finish

Full protection of load cells and cables

OPTION > Indicator > Indicator stand

Model	500UFS	1000UFS	2000UFS	3000UFS	4000UFS
Max.capacity (kg)	500	1,000	2,000	3,000	4,000
Dimensions (mm)	800(W) x 1200(D) x 70(H)				



Bar Scale BFS

Heavy-duty body

High quality powder coating finish

Full protection of load cells and cables

OPTION > Indicator > Indicator stand

Model	500BFS	1000BFS	2000BFS
Max.capacity (kg)	500	1000	2000
Dimensions (mm)	120(W) x 1200(D) x 70(H)		

Low Deck Truck Scale Ez Lodec

Rugged struction

Galvanized surface

Easy Installation

OPTION > Indicator > Auxiliary display



NO	Max.capacity (ton)	Readability	Size (m)	Length (mm)	L/C Q'y (EA)
1	40	10	3 x 6	6,250	4
2	60	10	3 x 12	12,200	6
3	80	20	3 x 18	18,150	8

Low Deck Truck Scale LMT

Wholly-enclosed cavity-shape scale for better strength, rigidity and anti-torsion of scale

Quick to install-simple and optimized design of modular

Longitudinally novel and easy connection and method of limit

Integrated load cell modular for convenient installation on site

Quality paint finish with shot blaster ball

Non-slip surface-reduce accidents

OPTION > Local display > Guide rail
> Unmanned Auto weighing system > PC software



Size	Max.capacity (t)	Dead Weight	Sections/unit length	Q'ty of Module	Remark
3X12m	60	7	2/5.8+5.8m	4	Upper Plate : Use12t check plate
3X15m	60	8.5	3/5+5+5m	6	
3X18m	60	10	3/5.8+5.8+5.8m	6	
3x18m	80	11.4	3/5.8+5.8+5.8m	6	

Vehicle Weighing Scale RW-PLZ

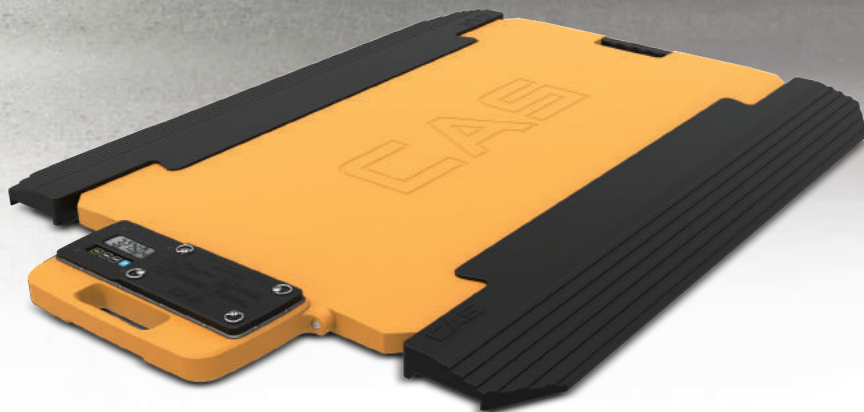
Low Profile (Light Weight)

Water Proof IP67

Balance weighing / In motion weighing(WIM)

Lithium-Ion Battery Operating time : 120hours / Charging time : 12hours

BLE(Bluetooth) communication



BODY

Model	RW-PLZ	
Capacity(t)	10	15
Division(kg)	20	20
Platform size (mm) (W x D x H)	900 x 500 x 34	
Body weight(kg)	30kg (Display included)	
Protection grade	IP67	

DISPLAY MODULE

Model	RW-PLZ
Display	5digit LCD(excluded), character height 15mm, back light
Key	On/OFF, Zero, Sum(kg/lb), Light
Protection grade	IP67
Communication type	BLE (Bluetooth)
Communication range	40m
A/D converting speed	Normal weighing: 10 times/sec In motion : 100 times/sec
Power	D/C Adapter / Rechargeable battery, 3.7V / 7,800mAh Li-ion
Battery life/Charging time	Approx. 120 hours / 12 hours

Vehicle Weighing Scale RW-5000Z

Horizontal balance function

WIM function and WIM Specification: ±3% accuracy under 10km/h / WIM 12-axes Measuring (Option)

Indication of error number on indicator display for communication errors between pads

IN/OUT BOUND measuring per vehicle (Full-vacant=product weight)

Indication of upper limit exceeding weight at upper limit setting or printing per axle/ setting print number of measuring



Model	RW-5000Z
Display	Graphic LCD with Backlight
Weight Communication type	BLE (Bluetooth 4.0)
Data Communication type	RS-232C / USB
Rechargeable battery	DC 12V adapter or DC 12-24V car charger for vehicle
Memory	Measuring data more than 10,000 on basis of 6-axes
Battery life/Charging time	Approx. 25 hours / 12 hours
Power	Pb DC 6V 10Ah
Printer	Thermal
No. of connection platform	8 ea
Product weight (kg)	Approx. 4.5 (Net weight)



Product Movie

Vehicle Weighing Scale RW-PL

Compact size & durable design

Printing warning lamp and buzzer in the case of overload

Possibility of saving 100 car number & 8000 Axle weight data

External equipment data back-up through USB port

IP67 waterproof indicator case

Storage parts such as cigar jack, cable and adapter through option



Model	RW-15PL
Max. Capacity(kg)	15,000
Readability(kg)	50
Protection Class	IP67
Product size(mm) (W x D x H)	900 x 500 x 34
Product weight(kg)	19.5
Ramp weight(kg)	4.3

Model	RW-5002PL
Display	Graphic LCD
Status indication	Zero, Tare, Stable, Battery Charge, Warning
Key	Alphanumeric key, Various function keys
Power	Pb DC 6V 10Ah
Rechargeable battery	DC 12V adapter or DC 12-24V car charger for vehicle
Battery life/Charging time	Approx. 25 hours / 12 hours
Product weight (kg)	Approx. 4.5 (Net weight)
Accessories	1 x Adapter, 1 x Printing paper, 1 x Shoulder belt

Vehicle Weighing Scale RW-S/L

- Easy-to-carry portable type
- Possible to display weight of each wheel or of all wheels
- Semipermanent structure made from stainless steel or aluminum
- Outstanding water resistant and vibration-proof level
- Easy to measure small/large size vehicle
- Used for finding over-loaded vehicle and
- Weighing test when car is let out
- Auto backlight & high accuracy
- Rechargeable battery : AA size (6x2)



RW-L



RW-S

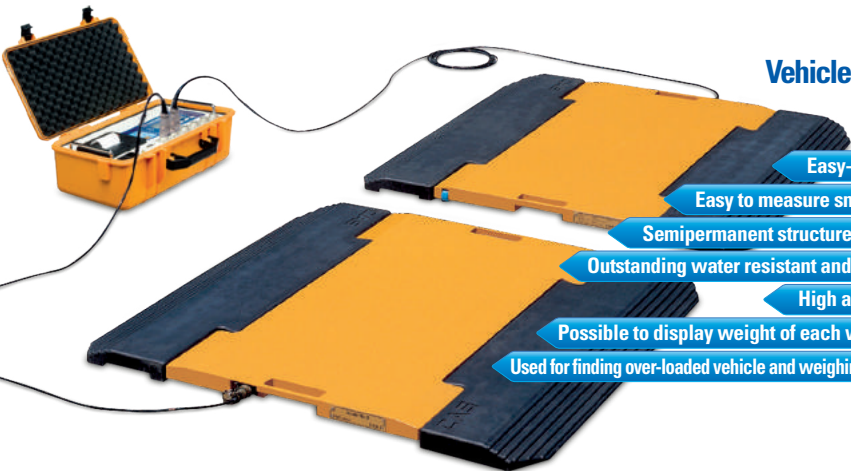
Model	RW-05S	RW-10S	RW-05L	RW-05S
Max.capacity(kg)	5,000	10,000	5,000	10,000
Readability(kg)	2	5	2	5
Accuracy(%)	0.1			
Size (mm)	P x P'	340 x 310		340 x600
	W x L x H	458 x 536 x 60		718 x 566 x 60
Power	Normal	1.2V AA size rechargeable battery 2Pack (1Pack = 6 EA)		
		DC adapter		
Battery operating time	Approx. 20hours(Charging time: Approx.10 hours)			
Display	5digit LCD (height 25mm)			
Operating Temperature (°C)	-10 ~ +40			



Vehicle Weighing Scale RW-P

- Easy-to-carry portable type
- Easy to measure small/large size vehicle
- Semipermanent structure made from aluminum
- Outstanding water resistant and vibration-proof effect
- High accuracy & slim shape
- Possible to display weight of each wheel or of all wheels
- Used for finding over-loaded vehicle and weighing test when car is let out

OPTION > Dummy plate



Crane Scale CASTON III PLUS



- 1.5 inch high visibility LED display
- Rugged enclosure suitable for rough environment
- Watertight structure, protect against moisture and dust
- High accuracy up to $\pm 0.03\%$ of capacity
- Infrared remote controller (for up to 8m)
- Low battery status lamp
- Easy to change a battery pack
- Swivel Hook
- Auto power off, sleep mode, hold functions

OPTION > Bluetooth communication
> TWN (Portable handheld indicator)



CASTON III PLUS BT



CASTON III PLUS
(1, 2, 3, 5ton)



CASTON III PLUS
(10, 15, 20, 30, 50ton)

Model	1THD ^{PLUS}	2THD ^{PLUS}	3THD ^{PLUS}	5THD ^{PLUS}	10THD ^{PLUS}	15THD ^{PLUS}	20THD ^{PLUS}	30THD ^{PLUS}	50THD ^{PLUS}
Max.capacity (t)	1	2	3	5	10	15	20	30	50
Readability (kg)	0.05	1	2	2	5	10	10	20	20
Resolution	1/2,000	1/2,000	1/1,500	1/2,500	1/2,000	1/1,500	1/2,000	1/1,500	1/2,500
Display digit	5 digits								
Display type	LED (1.5inch)								
Operating temperature (°C)	-10 ~ +40								
Power	Rechargeable battery / DC Adapter								
Dimensions (mm) (W x D x H)	280 x 341 x 510	280 x 341.5 x 515		280x 341 x 538	280 x 360 x 845	280 x 360 x 886	280 x 360 x 990	280 x 440 x 1200	280 x 440 x 1520
Product weight (kg)	28	28	28	31	44	53	76	220	390

Crane Scale

CASTON-II



Standard wireless remote controller

Rechargeable battery pack

Battery operated with low battery indication

On/off, zero, tare and hold function

Spare battery pack & charger included

OPTION > Bluetooth communication
> TWN (Portable handheld indicator)



Crane Scale

CASTON-I

Washdown case

Battery operated with low battery indication

On/off, zero, tare and hold function

Various display (LCD/LED)

Model	CASTON-II						CASTON-I					
	0.5THB	1THB	2THB	3THB	3THB (approval)	5THB	0.1THA	0.2THA	0.3THA	0.5THA	1THA	2THA
Max.capacity (kg)	500	1,000	2,000	3,000	3,000	5,000	100	200	300	500	1,000	2,000
Readability (kg)	0.2	0.5	1	2	1	2	0.05	0.1	0.1	0.2	0.5	1
Resolution	1/2,500	1/2,000	1/2,000	1/1,500	1/3,000	1/2,500	1/2,000	1/2,000	1/3,000	1/2,500	1/2,000	1/2,000
Display digit	5 digits						5 digits					
Display type	LED(1.2inch)						LCD(1inch) / LED(0.8inch)					
Operating temperature (°C)	-10 ~ +40						-10 ~ +40					
Power	Rechargeable battery / DC Adapter						Rechargeable battery / DC Adapter					
Dimensions (mm) (W x D x H)	258 x 440 x 380		230 x 370 x 474			230 x 370 x 518	258 x 440 x 1,330					
Product weight (kg)	15	15	17			20	6.5	6.7		6.9		

Tension Meter TM

Conversion of various units **IP65 Waterproof enclosure**

Large LCD display(letter height: 1.2inches, 30mm) to easily view weights

Peak hold, set points for relay control and keypad setup

Long battery operating time **Various communication interfaces**

Two optional wireless communication - Bluetooth or Zigbee

- OPTION** > TWN(Selectable between Bluetooth or Zigbee communication)
 > Wireless communication(Selectable between Bluetooth or Zigbee)
 > Top and Bottom Shackle > Portable carrying case(only for under 5 ton)
 > 20m Cable



Product Movie



Model	TM							
Max.capacity (kg)	500	1,000	3,000	5,000	10,000	15,000	25,000	50,000
Division(kg)	0.5	1	2	5	10	10	20	50
Unit	≤ 0.1% of full capacity							
Safety Factor	3:1							
Power	4 AA size 1.5V alkaline batteries / 0.3-0.5W							
Battery operating time	Wire type:Approx. 500 hours / Wireless type:Approx. 44hours							
Display	5 digit LCD display / Character height : 1.2inches(30mm)							
Operating Temperature (°C)	-20 ~ +60							
Protection Class	IP65							
Material	Aluminum				Steel			
Communication	Standard : RS-232C/RS-485/Setpoint(3 points) / Option : Bluetooth or Zigbee wireless communication							
Wireless Communication Distance	Bluetooth:Max. 100m / Zigbee:Max. 100m(only for open site)							
Product Weight(kg)	2.3	2.3	2.5	3.3	12	18	22	40

Crane Scale

NC-1



Washdown aluminum case

Wireless remote controller

Battery operated with low battery indication

Auto calibration and auto zero tracking

On/off, zero, tare and hold function

Remote Controller

Remote Controller provides easy & convenient operation from a distance.

Model	NC-1			
Max.capacity (kg)	50	100	200	500
Readability (kg)	0.02	0.05	0.1	0.2
Resolution	1/2,500	1/2,000	1/2,500	
Display digit	5 digits			
Display type	LCD(1inch)			
Operating temperature (°C)	-10 ~ +40			
Power	Rechargeable battery / DC Adapter			
Dimensions (mm) (W x D x H)	260 x 134 x 480			
Product weight (kg)	5.5			



Crane Scale

IE-1700

Adjustable brightness of the display (5 degrees)

Wireless remote controller

Battery operated with low battery indication

Model	IE-1700				
Max.capacity (kg)	100	200	300	500	1,000
Readability (g)	0.05	0.1	0.1	0.2	0.5
Resolution	1/2,000	1/3,000	1/2,500	1/2,000	
Display digit	5 digits				
Display type	LED (1.2inch)				
Operating temperature (°C)	-10 ~ +40				
Power	Rechargeable battery / DC Adapter				
Dimensions (mm) (W x D x H)	225 x 375 x 130		225 x 405 x 130		
Product weight (kg)	4		4.2		



Pallet Scale CPS



Easy Operation

Putting down the fork in stable with Oil Pressure

Saving time with Carrying and Weighing at once

Using Oil Pressure for putting down the fork in stable

Versatile for any size room

Heavy Duty for any size job

OPTION > Printer



Pallet Scale CPS^{PLUS}/MP

Easy to access the battery pack

High-visibility display

10 numeric keys & 5 function keys

Hydraulic lift and low

Durable polyurethane wheels

Solid and optimum design for logistics

Verified pallet truck scale
(With OIML & EC type approval : MP only)

OPTION > Thermal printer > Wheel brake(MP only)

Model		CPS-1			CPS-2			CPS ^{PLUS} -1			CPS ^{PLUS} -2			MP-1			MP-1.5			MP-2		
Product size	TYPE	A	B	C	A	B	C	A	B	C	A	B	C	A	B	C	A	B	C	A	B	C
		W	540	620	705	540	620	705	540	620	705	540	620	705	540	620	705	540	620	705	540	620
	L	1140			1140			1140			1140			1140			1140			1140		
Capacity (kg)		1000			2000			1500			2500			1000			1500			2000		
Readability (kg)		0.5			1			0.5			1			0.5			0.5			1		
Display		5digit LCD (Height 25mm)						6 digits LED (Height:25mm)						6 digit LED(Height: 25mm), 5 digit + sign LCD(Height: 24mm)								
Power		DC6V/ 10Ah Battery (AC 110V/220V Charger)						DC 6V/ 5Ah Battery (AC 110V/220V Charger)						6VDC / 10Ah rechargeable battery)(6VDC / 2Ah charger)								
Battery operating time		-						100 hours (continuous usage)						85 Hours								
Battery charging time		-						12 Hours						10 Hours								
Operating temperature(°C)		-10 ~ +40						-10~ +40						-10~ +40								

Food waste pickup scale **CBS PLUS**

Picking up and weighing food waste at once

Rugged construction

Easy operation

Storing and searching weighing data

Model	CBS PLUS
Max.Capacity(kg)	300
Readability(kg)	0.5
Resolution	1/600
Indicator	CI-605A
Operating temperature(°C)	-20 ~ +50
Power	DC24V(vehicle power usage)
Product size(mm) (W x D x H)	External panel : 300 x 306 x 320 Platform : 930 x 720 x 110
Product weight(kg)	External panel : Approx. 15 / Platform : Approx. 26



Product Movie

Drum Scale **CDS PLUS**

Easy-to-carry (Battery type) Easy operation

Possible to change drum clamp method according to shape of drum (ex: plastic drum)

Reduce working hours by weight and destination movement at the same time

Automatic ascension and descent of drum

Application > Chemical plant, lubricant, pigments plant



Fork Lift Scale **CFS**

Easily attached the scale to the fork lift

Built-in Level Sensor for degree of precision improvement

Reduce working hours by weight and destination movement at the same time

Function of scale and transportation

Application > Distribution center, cargo terminal, warehouse, feed plant, airport cargo terminal at arrival and shipment of various products

Logistics Inspection System CLIS-200

- ▶ Weigh products / Manage barcodes
- ▶ Durable structure(Sensor protection)
- ▶ Industrial PC / 15" touch monitor
- ▶ Stock control program installed
- ▶ Portable tray
- ▶ Barcode scanner connect

OPTION > Barcode scanner connect



Product Movie



Logistics Inspection System CLIS-500

- ▶ Measure the weight/volume
- ▶ Image data save and Barcode scan
- ▶ Industrial PC / 15" touch monitor
- ▶ Durable structure(Sensor protection)
- ▶ Measuring, operating program installed
- ▶ Fixed tray

OPTION > Barcode scanner connect



CLIS Private Program

Logistics Inspection System CLIS-700

- ▶ Auto weighing, volume, image save measure
- ▶ Image data save and barcode scan
- ▶ Image data USB back up
- ▶ Industrial PC / 15" touch monitor
- ▶ Auto measuring, operating program installed
- ▶ Auto system

OPTION > Handy barcode scanner connect

Model	CLIS-200	CLIS-500	CLIS-700
Max. capacity(kg)	60	60	60
Repeatability(g)	10	10	20
Measuring range(mm) (W x D x H)	-	MAX : 500 x 450 x 450 MIN : 150 x 150 x 50 (Allowable error : +/- 5)	MAX : 600 x 750 x 600 MIN : 50 x 150 x 50 (Allowable error +/- 5)
Display	15" touch monitor	15" touch monitor	15" touch monitor
Power	AC 220V	AC 220V	AC 220V
Tray size(mm) (W x D)	700 x 600	700 x 600	-
Product size(mm) (W x D x H)	810 x 910 x 1600	820 x 920 x 2150	1500 x 1200 x 2550

Auto Checker CCK-5500

Arbitrary selection of absolute value and deviation measurement method

Built-in data double back up function in case of blackout

Auto zero tracking function

Built-in temperature change and noise compensation circuit

OPTION > Printing function



Product Movie



Auto Checker CCK-5900

Convenient 10" touch screen type

Built-in data double back up function in case of blackout

Zero and SPAN auto calibration function

Built-in temperature change and noise compensation circuit

Weight setting value storage and recall functions for each item (999EA)

Convenient data collection and analysis

USB memory storage and update

Model	300	600	1200	3K	6K	20K	30K	40K	60K	
Max.capacity (kg)	0.3	0.3	1.2	3	6	20	30	40	60	
Weigh range (g)	3 ~ 300	6 ~ 600	12 ~ 1,200	30 ~ 3,000	6 ~ 6,000	200 ~ 20,000	300 ~ 30,000	400 ~ 40,000	600 ~ 60,000	
Optimum Accuracy (g)	±0.15	±0.3	±0.4	±1.5	±3	±10	±10	±20	±40	
Readability (g)	0.05	0.1	0.2	0.5	1	5	5	10	20	
Belt width (mm)	100	150	220	300	360	380	480	580	680	
Max. Weigh. Speed (ea/min)	250	220	180	100	75	60	45	30	20	
Feed speed (m/min)	10 ~ 84	10 ~ 74	10 ~ 74	10 ~ 58	10 ~ 53	10 ~ 54	10 ~ 52	10 ~ 49	10 ~ 33	
Product Dimension size	width (mm)	30 ~ 100	30 ~ 150	30 ~ 220	30 ~ 300	30 ~ 360	30 ~ 380	30 ~ 480	30 ~ 580	30 ~ 680
	length (mm)	30 ~ 200	30 ~ 260	30 ~ 320	30 ~ 450	30 ~ 550	30 ~ 700	30 ~ 900	30 ~ 1,100	30 ~ 1,100
Power	200VAC ±10%, Single Phase, 50/60Hz									
Circumstances conditions	5°C ~ 35°C (41°F ~ 95°F), Variation not to exceed ±2°C (4°F)/hr, Relative Humidity: 35% ~ 85%									

Metal Detector CMS2000



Character input mode: Easy to register product name by keypad

Adjust detection signal timer: Adjustable for timer of detection signal

Attribute: Selection signal contact (A or B)

New item register: Register Max. 99 items

Factory setting: Save and restore default setting

Basic screen

- Quick setting by function key(F1~F4)
- Quick setting sensitivity and item name
- Value of product effect

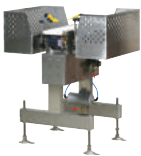
Auto calibration

- Quick calibrate passing through products
- Easy to understand product status (Dry or Wet)
- Auto searching for adapted phase angle

OPTION > IP69k (Waterproof) > Linkable to PC > Cover for wind breaking > Plastic belt/Urethane belt

Model	CMS2000-350						CMS2000-600					
Belt width (mm)	100	150	200	250	300	350	350	400	450	500	550	600
Aperture width (mm)	200	250	300	350	400	450	450	500	550	600	650	700
Product weight (kg)	0.4	0.6	1.5	2.0	3.0	6.0	20	20	30	30	40	40
Pass height	Aperture height: -30mm						Aperture height: -30mm					
Conveyor length	900/1000/1100mm						1300/1500/1800mm					
Speed range	10~70m/min						10~50m/min					
Rejector type	Belt stop, Flip bar, Pusher, Air blast, Drop down, Swing						Belt stop, Pusher, Drop down, Swing					
Power requirements	200VAC ±10%, 1 Phase, 50/60Hz						200VAC ±10%, 1 Phase, 50/60Hz					

Rejector



Air Jet

Using strong winds for sorting (appropriate for light materials)



Carrier

Changing directions to a sliding type



Conveyor Drop

Moving conveyor belt up or down



Belt Pusher

Pusher pushes materials out from the conveyor



Roller Pusher

Sorting materials in Roller Conveyor as the Belt Pusher (appropriate for heavy materials)



Flip Bar

Flip Bar pushes for both directions

Type	Air Jet	Carrier	Conveyor Drop	Belt Pusher	Roller Pusher	Flip Bar
Max. capacity	1.2 kg	600 g	6 kg	30 kg	3 ~ 60 kg	6 kg
Max. throughput (pcs/min)	Max. 250	Max. 180	Max. 60	Max. 180	Max. 80	Max. 120
Sorting point	2	3	2	2	2	3
Conveyor belt width (mm)	100 ~ 220	150	100 ~ 360	100 ~ 480	510 ~ 940	100 ~ 360

Multi-level Checkweigher **CCK-5500-M**



Automatic checkweighers used for fishery products or products that need to be sorted separately by weight grade

Optimum Accuracy can be different depending on product condition and conveyor speed

Max. Weigh Speed can be different depending on product condition and conveyor speed

Weight grade can be enabled up to Max. 8 grade

OPTION > Buzzer & Lamp > Printer

Model	CCK-5500-M
Weighing Range	10g ~ 60kg
Precision Resolution	0.1g ~ 20g
Maximam throughput	280 ea/min
Belt speed (m/min)	10 ~ 110 m/min
Product Memory	50 Item
Weight Grade	Standard 8 Grade

Filling Machine **CFM-030KMS**

Using the second control valve for high speed, high fixing

Nozzle which is easy resolution & cleaning structure

Possible to use explosion area

Possibility of high temperature filling

Free Roller sticking at the upper part of the scale

Easy Nozzle top and bottom, left and right adjustment

Capa: 30kg

Readability: 10g



Model	CMS2000-350					
Belt width (mm)	100	150	200	250	300	350
Aperture width (mm)	200	250	300	350	400	450
Product weight (kg)	0.4	0.6	1.5	2.0	3.0	6.0
Pass height	Aperture height: -30mm					
Conveyor length	900/1000/1100mm					
Speed range	10~70m/min					
Rejector type	Belt stop, Flip bar, Pusher, Air blast, Drop down, Swing					
Power requirements	200VAC ±10%, 1 Phase, 50/60Hz					



Auto MAP Machine CTMAP

Maintenance of freshness by inert gas exchanging

SUS body for durability and rustless

BUSCH pump for better performance

Mould type for easy to use

Model	CTMAP-S200-2	CTMAP-S200-4	CTMAP-A200-2	CTMAP-A200-4
Max. Tray dimension(mm) (W x D x H)	182 x 234 x 80	182 x 234 x 80	182 x 234 x 80	182 x 234 x 80
Max. Width of Film(mm)	445	445	445	445
Max. Diameter of Film(mm)	255	255	255	255
Packaging speed(times/min)	4 ~ 5	4 ~ 5	4 ~ 6	4 ~ 6
Power	3Ø 380V 50Hz			
Vacuum pump(m³/h)	40	63	63	63
Dimension(mm) (W x D x H)	1000 x 1200 x 1700	1150 x 1250 x 1700	2500 x 950 x 1500	3500 x 950 x 1500
Gas	CO ₂ , O ₂ , N ₂	CO ₂ , O ₂ , N ₂	CO ₂ , O ₂ , N ₂	CO ₂ , O ₂ , N ₂

Hand Sealer CNT



Hand Sealer CXP



Model	CNT-200/2	CNT-300/2	CNT-400/2	CXP-200/5
Dimension (mm) (W x D x L)	75 x 200 x 300	75 x 200 x 410	75 x 200 x 510	450 x 380 x 210
Temperature of sealing Max.	150	150	150	150
Sealing time(Sec)	MIN 0.5 - MAX 3	MIN 0.5 - MAX 3	MIN 0.5 - MAX 3	MIN 0.5 - MAX 2.5
Regular sealing time(Sec)	1.5	1.5	1.5	1.5
Length of sealing (mm) (W x L)	2 x 200	2 x 300	2 x 400	2 ~ 5 x 200 ~ 400
Power consumption(W)	310	510	700	950
sealing thickness(mm)	0.5 Below	0.5 Below	0.5 Below	0.5 below
Product weight (kg)	3	3.4	4	3.3
Fuse	3A	4A	5A	
Material for sealing	PE, PP, LDPE, PVC	PE, PP, LDPE, PVC	PE, PP, LDPE, PVC	PE, PP, LDPE, PVC



Table top vacuum packaging machine

Vacuum Machine CVP

Control system: Computer control panel

Vacuum pump

Machine lid gemel

Shake avoiding system

Main structure's material

V type lid gasket



Model	CVP-260 PD	CVP-350 US	CVP-450/A
Machine dimensions (mm) (L x W x H)	480 x 330 x 320	560 x 425 x 460	560 x 520 x 460
Chamber dimensions (mm) (L x W x H)	385 x 280 x 90(50)	450 x 370 x 220(170)	460 x 450 x 220(170)
Sealer dimensions (mm) (L x W)	260 x 8	350 x 8	450 x 8
Production cycle		1 - 2 times/min	

Tray Sealer CTP

Patented ruthenox heater

Smart thermostat

Silk screen printing heater

Safe film cutting

Adjustable sealing time

Light-weighted and sophisticated design

APPLICATION > Cement, steel, fertilizer, feed

Model	CTP-320	CTP-330
Dimensions (mm) (W x D x H)	305 x 350 x 280	405 x 350 x 480
Power	AC 220V, 50/60Hz	
Consumption power	1,400W-1,800W	
Film size (mm)	130/150/160/240	



Hand Wrapper CNW

SUS body for durability

Safety by double aluminum covered heater



Model	CNW-460
Dimension(mm) (W x D x L)	470 x 600 x 100
Temperature of H/P	90 C MAX
Temperature of H/C	150 C MAX
Voltage	220V / 50-60Hz
Wrapping length	450mm FILM
Power consumption	175W
Weight(kg)	6
Material for sealing	PE, PVC WRAP FILM

Auto Packing Machine CPK

Weighing product continually by belt conveyor

Calculating raw material weight, belt speed and indicating flux and accumulation statistics per hour

Capa : 200kg/h~1,000t/h

Belt Width: 450 ~ 2,000mm

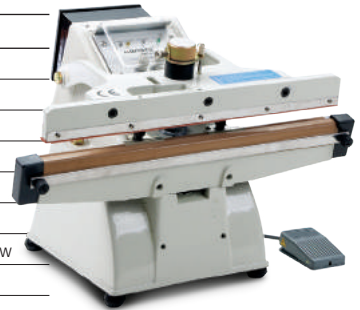
Accuracy: 0.25 ~ 1%

APPLICATION > Cement, steel, fertilizer, feed



Foot Sealer (Auto type) CNA

Description	CNA		
Dimension(mm) (W x L x H)	540 x 470 x 440 In Case of PHA-450		
Temperature of sealing	MAX. 150		
Sealing time(Sec)	MIN 0.5 - MAX 2.5		
Regular sealing time	It's different according to the kind of film		
Length of sealing(mm) (W x L)	2 ~ 10 x 200 ~ 800		
Power consumption	950W		
Sealing thickness(mm)	0.5 Below	0.5 Below	0.5 Below
Product weight(kg)	28		
Power lamp/Sealing lamp	With Color		
Material for sealing	PE, PP, LDPE, PVC	PE, PP, LDPE, PVC	PE, PP, LDPE, PVC



Foot Sealer (Semi-auto Type) CNS

Auto operation by time setting

Solenoid to lessen a body burden



Description	CNS		
Dimension(mm) (W x L x H)	540 x 470 x 440 In case of NS-450		
Temperature of sealing	150 MAX		
Sealing time(Sec)	MIN 0.5 - MAX 2.5		
Regular sealing time	It's different according to the kind of film		
Length of sealing(mm) (W x L)	2 ~ 10 x 200 ~ 800		
Power consumption(W)	950		
Sealing thickness(mm)	0.5 Below	0.5 Below	0.5 Below
Product Weight(kg)	28		
Power lamp/Sealing lamp	With Color		
Material for sealing	PE, PP, LDPE, PVC	PE, PP, LDPE, PVC	PE, PP, LDPE, PVC



Weighing Controller CI-600A



- High A/D conversion speed (200times/sec)
- High display resolution 1/10,000
- User-friendly interface (4.3" Full Graphic TFT LCD)
- Shielded against electrical noise (RFI & EMI)
- Storing 100 items' information
- USB data backup Weight Back-up
- Self-hardware test function
- PC software to manage indicator
- Various communication interfaces
- OIML R76 & R61 approved

OPTION > Analog Out Card (V-out (0-10 V) / I-out (4-20mA))
> RS485/RS422 > BCD Out Card > Printer > Remote display

Weighing Controller CI-600D



- CI-600D for Digital Loadcell
- User-friendly interface (4.3" Full Graphic TFT LCD)
- Self diagnosis of Digital loadCell
- ModBUS-RTU Protocol (RS-485)
- USB data backup
- CI-600 manager program
- Various communication interfaces

OPTION > Analog Out Card (V-out (0-10 V) / I-out (4-20mA))
> RS485/RS422 > BCD Out Card > Printer > Remote display



Product Movie



Display protection cover



USB data backup



PC Software



CI-507A



CI-501A



CI-502A



CI-505A

Indicator CI-500A CE

- High precision, high resolution indicator | Easy operation with ten key
- High visibility, large FND display (20mm)
- High speed of A/D conversion (200 times/sec.)
- Easy operation & various functions
- Simple Calibration (FULL DIGITAL CALIBRATION)
- Various specification of weight conversion speed (Digital Filter)
- Built-in self test & self recovery functions
- Saving of data at sudden power failure
- Various printer connection (Serial, Centronics parallel) 4 wire, 6 wire load cells support (8 load cells connection)
- Independent Zero & span calibration
- Self hardware test | Basic Interface: RS-232C, Current loop
- External input: 4 EA
- External output: 6 EA (CI-502A/505A/507A)



Product Movie

OPTION > RS-422/RS-485 interface, Analog output, BCD Input/Output

APPLICATION > Measuring instrument tester, Platform scale, Truck scale, Packer scale, Hopperscale, Limit scale, Checker scale

Indicator CI-200A/201A



- Clear display(CI-200A : LED, CI-201A : LCD)
- Number key & function key application
- Various types of power
- Weight back-up
- High speed of A/D conversion (80times/sec.)
- 1/10,000 high resolution
- 4 wire, 6 wire load cells support (can be connected 8 wire load cell)
- USB Communication(with power)



Product Movie



CI-200A



CI-201A

OPTION > RS-442/485 interface,

Second Serial Communication-Ports, USB port

APPLICATION > Platform scale, Pallet scale, Forklift scale, Floor scale

Indicator CI-150A

Minimal Size & Clear LED Display

High speed ADC : 320 times/sec

Support Modbus RTU Protocol

Multi-calibration

Various interfaces(Standard : RS-232C, Option : RS-485, Analog output, External 2In/4output)

Weight Back-up

OPTION > RS-485, External 2 Input / 4 Output, RTC(Inner clock)
Analog output

APPLICATION > Various measuring equipment, Platform scale



Indicator CI-1580A

High-speed A/D conversion (200 times/sec) & high display resolution (1/10,000)

High-visibility LED display

Watch-dog & self-hardware test function

Weight back-up function

External input : 2 EA

External output : 3 EA

OPTION > 12 or 24V DC adapter, RS-422/485, Analog out (V-out: 0-10V, I-out: 4-20mA)

APPLICATION > Platform scale, Truck scale, Checking scale, Packing scale, Tester



Indicator CI-2001A/B



Wall-mounted/small indicator

Watch-Dog circuitry (System restoration)

Weight Back-Up (Saving of weight at sudden power failure)

RS-232C interface

Display: CI-2001A (LED), CI-2001B (LCD)

USB Communication

OPTION > RS-485 interface, Inner Clock(CI-2001B only)
> USB communication, Panel Guide

APPLICATION > Platform scale



CI-2001A



CI-2001B

Indicator CI-2400BS

High precision, high resolution

Waterproof design (IP65)

Backlight I RS-232C interface

OPTION > RS-442/485 interface
APPLICATION > Platform scale



Indicator CI-2001AS/BS



High resolution small-size indicator

4 wire A/D conversion part application

RS-232C interface

Waterproof design (IP65)

CI-2001AS (LED), CI-2001BS (LCD)

Weight Back-Up (Saving of weight at sudden power failure)

OPTION > RS-442/485 interface, Inner Clock
APPLICATION > Platform scale



CI-2001AS



CI-2001BS

Indicator CI-200S/200SC

IP67 & stainless steel structure

Clear LED display

Number key & function key application

High speed of A/D conversion (80 times/sec.)

Rechargeable battery

Easy removable power & communication cable through waterproof connector

Comparing with weight through weight comparing blinker light

OPTION > LCD display, RS-442/485 interface
APPLICATION > Platform scale, Floor scale



CI-200SC



CI-200S



Bluetooth-Hand Type Indicator

TWN 



 Bluetooth



Compact size and handheld type

Selectable communication (option of choosing between Zigbee or Bluetooth version)

TFT LCD display with screen visor

USB communication to PC

Memory capacity of 100 items & 5,000 recorded weight data (including date, time and gross weight.)

Item management and data back-up with TW-Works software

OPTION > Wireless communication (select Zigbee or Bluetooth version)

Indicator

PDI  

Suitable for the Checkout scale and weighing system

Easy operations

Simple and prompt full digital calibration (automatic weight setup at once)

Weight backup functions (restoring weight at the power supply On/Off)

Multiple weights setup functions (5 point input weight setup)

Command Mode (ECR Protocol)

6 line(basic)/4 line load cell Input

OPTION > USB Interface



Indicator PBI

Economic indicator for 4 L/C Platform Scale

Pb R/Battery, DC 12V Adaptor

Display : 6 digits with Backlight (Digit Height = 30mm)

6 Pin connector with 0.3m cable (CI-200A Connector)

RS-232C(RJ-11) as a standard

Wall-Mount Bracket as a standard

Power : DC 12V adaptor

OPTION > RS232C converter (RJ11 to D-Sub 9 pin)



Indicator DBI

Dual range

Counting & Percentage mode

Accumulation mode

Weight Comparison

Daily total function

Rechargeable battery

OPTION > Stand bracket, Wall bracket

APPLICATION > Bench scale, Single load cell application



DBI-E



DBI-C

Indicator HDI CE

- Dual display indicator
- Dual range Counting & Percentage mode
- Accumulation mode Weight Comparison
- Daily total function Rechargeable battery

OPTION > Stand bracket, Wall bracket
 APPLICATION > Bench scale, Single load cell application



Indicator EBI OIML CE

- Price computing indicator
- Dual display
- 24 direct PLUs
- 200 Indirect PLUs
- Rechargeable battery
- Daily total function

OPTION > Stand bracket, Wall bracket
 APPLICATION > Price computing application, Bench scale



Indicator BI OIML CE

- General (manganese, alkaline) battery or rechargeable battery
- High precision & high resolution
- Waterproof design (IP65)
- Backlight

OPTION > Rechargeable battery, fixing bracket
 APPLICATION > Bench Scale



Indicator IE-116 PLUS

- Rechargeable battery
- LED display

OPTION > Rechargeable battery, fixing bracket
 APPLICATION > Platform scale, Bench scale, Pallet scale, Floor scale



Indicator CD-3000

High-resolution display

Size: 2,3,4 (inch)

5 digits LED | Zero, tare, stable lamp

RS-232C & current loop auto setting

APPLICATION > Truck scale



Explosion Proof Indicator EXI-200AD

Weighing Indicator for Hazardous area (Zone 1, 2 & 21, 22)



II 2G Ex d IIB+H2 T6 Gb for Gases
II 2D Ex tb IIIC T80 °C Db for Dusts

ATEX & KCS approval

Front opening structure

A/D sampling rate : 320times/sec

Resolution : 1/10,000

7 segment 6digits LED

Touch Keypad

A variety of interfaces

OPTION > Analog out > Ethernet > External 2In/4Output > RTC

Explosion Proof Indicator EXI-600AD



Weighing Indicator for Hazardous area (Zone 1, 2 & 21, 22)

II 2G Ex d IIB+H2 T6 Gb for Gases
II 2D Ex tb IIIC T80 °C Db for Dusts

ATEX & KCS approval

Front opening structure

A/D sampling rate : 200times/sec

Resolution : 1/10,000

4.3" Graphic LCD

Touch Keypad

A variety of interfaces

OPTION > Analog out > Ethernet > BCD In/Out
> External 4In/6Output > External 6In/8Output

APPLICATION > Explosion-proof type platform scale, Explosive material weighing





Weight Transmitter WTM-200/WTM-500

7-Segment 6digits LED display (height : 8mm)

Slim and small structure

Easy setup by using 4keys(only for WTM-500/501)

Easy setup of parameter and weighing data analysis via PC software

High resolution 1/10,000

High A/D conversion speed : 5~1,600time/sec

Theoretic calibration Multi point calibration

Various interfaces



WTM-500/501



WTM-200/201



Model		WTM-200	WTM-201	WTM-500	WTM-501
Display & Key		-	-	7 segment 6digits LED(Height : 8mm), 4 function key	
Power		10 ~ 24VDC			
Excitation Voltage		5VDC			
External resolution(OIML)		1/10,000			
A/D converting speed		5 ~ 1,600 times/sec			
Load Cell connection		4-wire or 6-wire(Connection No. 8 at 350ohm)			
Calibration	Through PC software	○	○	○	○
	Through key			○	○
Operating Temperature		-10 ~ 40°C			
Interface	RS-485	○	○	○	○
	Analog Output (0~20mA, 0~24mA, 4~20mA, 0~10V, 0~5V, ±5V, ±10V)		○		○
	External I/O (In/Out : 2/4ea)		○		○
Product Size(W×D×H/mm)		103×126×40			
Options		External 2In/4Out, Analog output, Alibi memory, Ethernet			

Load Cell

Noise Resistance NR-series CE

Lightning Protection

Hermetically sealed

High Frequency noise protection in Industrial

Environment (using Inverters or Servo Motor)

APPLICATION > Weinbridge > Hopper, Silo, Tank etc.



LS-NR



LSS-NR



CC/CT-NR



HC-NR



WBK-NR

Model	LS-NR	LSS-NR	CC/CT-NR	HC-NR	WBK-NR
Rated Capacity (kgf)	1K,2K,3K,5K, 10K,20K,30K,50K, 100K,200K,300K	1K,2K,3K,5K, 10K,20K,50K	20,50,100,200, 300,500,1K,2K, 3K,5K,10K,20K	20K,30K,50K, 100K,200K	10K,20K,25K, 30K,50K,100K
Accuracy Class	C3	-	-	-	C3
Combined Error (% R.O)	≤0.02	≤0.03	≤0.02	≤0.15	≤0.02
Creep (% R.O)	≤0.03	≤0.03	≤0.03	≤0.03	≤0.017
Excitation	Recommended (V)	10	10	10	10
	Maximum (V)	15	15	15	15
Compensated Temperature Range(°C)	-10--+40	-10--+40	-10--+40	-10--+40	-10--+40
Operating Temperature Range(°C)	-20--+80	-20--+80	-20--+80	-20--+80	-40--+80
Material & Plate	Paint Finished Steel	Stainless Steel	Paint Finished Steel	Paint Finished Steel	Stainless Steel
Electrical Character	Over voltage (V. %)	75 AC/DC ±25%			
	RS (M Hz)	80 ~ 1000MHz, 10V/m			
	Surge (kV)	± 2			
Certifications	CE				

Single Ended Shear Beam Load Cell



Model		BC	BCO		BCW	BCL	
Rated Capacity (kgf)		3,5(1.0mV)/6,12,15,30,60,100,150,200(1.2mV)	60,70,150,180,200		60,150	1,2,3,5,6,10,15,20,30,35,50,60,100,150,200	
Accuracy Class		-	D3	C3	D3	D3	C3
Combined Error (% R.O)		≤0.03	≤0.03	≤0.025	≤0.02	≤0.03	≤0.025
Creep for 30 min. (% R.O)		≤0.03	≤0.03	≤0.017	≤0.017	≤0.03	≤0.017
Excitation	Recommended (V)	10	10		10	10	
	Maximum (V)	15	15		15	15	
Compensated Temperature Range(°C)		-10~+40	-10 ~ +40		-10~+40	-10~+40	
Operating Temperature Range(°C)		-20~+70	-20~+70		-20~+70	-20~+70	
Material & Plate		Anodized Aluminum	Anodized Aluminum		Anodized Aluminum	Anodized Aluminum	

Single Ended Shear Beam Load Cell



Model		BCA		BCD	BCM		BC-F
Rated Capacity (kgf)		5, 10, 15, 20, 30, 50, 75, 100		30, 50, 75, 100, 150, 250, 300, 500	50, 75, 100, 150, 200, 300, 500, 750		300, 600
Accuracy Class		D3	C3	-	D3	C3	D3
Combined Error (% R.O)		≤0.03	≤0.02	≤0.03	≤0.03	≤0.02	≤0.03
Creep for 30 min. (% R.O)		≤0.03	≤0.017	≤0.03	≤0.03	≤0.017	≤0.03
Excitation	Recommended (V)	10		10	10		10
	Maximum (V)	15		15	15		15
Compensated Temperature Range(°C)		-10~+40		-10~+40	-10~+40		-10~+40
Operating Temperature Range(°C)		-20~+70		-20~+70	-20~+70		-20~+70
Material & Plate		Anodized Aluminum		Anodized Aluminum	Anodized Aluminum		Anodized Aluminum

Single Ended Shear Beam Load Cell



Model		BCH	BCB	BCLS		
Rated Capacity (kgf)		500, 1K, 1.5K, 2K, 2.5K	200, 250, 300, 350, 600, 700, 800, 1K	10, 15, 20, 30, 50/60, 150		
Accuracy Class		-	C3	D3	C3	C4 (except 60, 150kg)
Combined Error (% R.O)		≤0.03	≤0.02	≤0.03	≤0.025	≤0.015
Creep for 30 min. (% R.O)		≤0.03	≤0.017	≤0.03	≤0.017	≤0.015
Excitation	Recommended (V)	10	10	10		
	Maximum (V)	15	15	15		
Compensated Temperature Range(°C)		-10~+40	-10~ +40	-10~+40		
Operating Temperature Range(°C)		-20~+70	-20~+70	-20~+70		
Material & Plate		Anodized Aluminum	Anodized Aluminum	Stainless Steel		

Single Ended Shear Beam Load Cell



Model		BSH	BS	BSA		BSB
Rated Capacity (kgf)		500,1K,2K,3K,5K	250, 500(1.5mV)/ 1K, 2K, 5K,10K(2.0mV)	250, 500,1K,2K,3K,5K	250,500,1K,2K,3K,5K,10K	
Accuracy Class		-	-	D3	C3	-
Combined Error (% R.O)		≤0.03	≤0.03	≤0.03	≤0.025	≤0.03
Creep for 30 min. (% R.O)		≤0.03	≤0.03	≤0.03	≤0.017	≤0.03
Excitation	Recommended (V)	10	10	10		10
	Maximum (V)	15	15	15		15
Compensated Temperature Range(°C)		-10~+40	-10~+40	-10~+40		-10~+40
Operating Temperature Range(°C)		-30~+80	-20~+80	-30~+80		-30~+80
Material & Plate		Nickel plated steel	Nickel Plated Steel	Nickel Plated Steel		Nickel Plated Steel



S-Type Load Cell

BSS		HBS		Model	SB	SBA	
500,1K,2K,3K,5K		10,20,50,100, 200,300,500,1K,2K		Rated Capacity (kgf)	20,50,75,100,200, 250,500,1K,2K	25,50,100,200,500, 1K,2K,3K,5K	
D3	C3	D3	C3	Accuracy Class	-	D3	C3
≤0.03	≤0.025	≤0.03	≤0.02	Combined Error (% R.O)	≤0.03	≤0.03	≤0.02
≤0.03	≤0.017	≤0.03	≤0.017	Creep for 30 min. (% R.O)	≤0.03	≤0.03	≤0.017
10		10		Excitation	Recommended (V)	10	
15		15			Maximum (V)	15	
-10~+40		-10~+40		Compensated Temperature Range(°C)		-10~+40	
-30~+80		-30~+80		Operating Temperature Range(°C)		-30~+80	
Stainless Steel		Stainless Steel		Material & Plate		Anodized Aluminum, Nickel Plated Steel	



Pancake Load Cell

SBS	Model	LS		LSB	LSC	
500,1K,2K,5K	Rated Capacity (kgf)	1K,2K,3K,5K,10K,20K, 30K,50K,100K,200K,300K		20K	2K,5K,10K,20K,50K,100K	
-	Accuracy Class	D3	C3	-	-	
≤0.05	Combined Error (% R.O)	≤0.05	≤0.02	≤0.03	≤0.05	
≤0.03	Creep for 30 min. (% R.O)	≤0.03	≤0.03	≤0.03	≤0.03	
10	Excitation	Recommended (V)		10		
15		Maximum (V)		15		
-10~+40	Compensated Temperature Range(°C)		-10~+40		-10~+40	
-30~+80	Operating Temperature Range(°C)		-30~+80		-30~+80	
Stainless Steel	Material & Plate		Paint Finished Steel		Nickel Plated Steel	



Canister Load Cell



<i>MNT</i>	<i>MNC</i>	<i>NMNC</i>	<i>Model</i>		<i>CC/CT</i>	
50,100,200,500	50,100,200,500,1K,2K,5K,10K,20K	50,100,200,500,1K,2K,3K	Rated Capacity (kgf)		20,50,100,200,300,500,1K,2K,3K,5K,10K,20K	
-	-	-	Accuracy Class		A	B
≤0.15	≤0.15	≤0.5	Combined Error (% R.O)		≤0.02	≤0.05
≤0.1	≤0.03	≤0.5	Creep for 30 min. (% R.O)		≤0.03	≤0.03
10	10	10	Excitation	Recommended (V)	10	
15	15	15		Maximum (V)	15	
-10~+40	-10~+40	-10~+40	Compensated Temperature Range(°C)		-10~+40	
-30~+80	-30~+80	-30~+80	Operating Temperature Range(°C)		-30~+80	
Stainless Steel	Stainless Steel, Paint Steel(5K~20K kgf)	Stainless Steel	Material & Plate		Paint Finished Steel	

Canister Load Cell



<i>Model</i>	<i>CTS</i>		<i>HC</i>	<i>WBK</i>		<i>WBKE</i>
Rated Capacity (kgf)	200,300,500,1K,2K,3K,5K		20K,30K,50K,100K,200K	10K,20K,25K,30K,50K		10K,20K,25K,30K
Accuracy Class	A	B	-	D3	C3	C3
Combined Error (% R.O)	≤0.02	≤0.05	≤0.15	≤0.03	≤0.02	≤0.02
Creep for 30 min. (% R.O)	≤0.03	≤0.03	≤0.03	≤0.03	≤0.17	≤0.17
Excitation	Recommended (V)		10	10		10
	Maximum (V)		15	15		15
Compensated Temperature Range(°C)	-10~+40		-10~+40	-10~+40		-10~+40
Operating Temperature Range(°C)	-30~+80		-30~+80	-40~+80		-20~+80
Material & Plate	Stainless Steel		Paint Finished Steel	Stainless Steel		Stainless Steel

Double Ended Shear Beam Load Cell



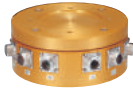
<i>Model</i>	<i>DES-B</i>	<i>DSB-B</i>	<i>DSB-20</i>	<i>DSB-1</i>	
Rated Capacity (kgf)	5,10,15	10,25,30	20	10,20,25,50,60,75K(klb)	
Accuracy Class	-	-	-	D3	B10 (IIIIL10,000m)
Combined Error (% R.O)	≤0.03	≤0.03	≤0.03	≤0.05	≤0.03
Creep for 30 min. (% R.O)	≤0.03	≤0.03	≤0.03	≤0.05	≤0.02
Excitation	Recommended (V)		10	10	
	Maximum (V)		15	15	
Compensated Temperature Range(°C)	-10~+40	-10~+40	-10~+40	-10~+40	
Operating Temperature Range(°C)	-30~+80	-30~+80	-30~+80	-30~+80	
Material & Plate	Plated Steel	Paint Finished Steel	Nickel Plated Steel	Nickel Plated Steel	



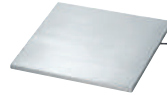
Special Load Cell



DSB2		Model	CHE	SMN	LSW
25,40,75(klb)		Rated Capacity (kgf)	20K,30K,50K,100K,150K,200K	1,2,5 ^(0.5mV) /10,20,30,50,100,200, 300,500,1K,2K(1mV)	1K, 2K, 3K, 5K
D3	BIO (III L10,000m)	Accuracy Class	D3	-	-
≤0.05	≤0.03	Combined Error (% R.O)	≤1.0	≤2.0	≤0.05
≤0.05	≤0.02	Creep for 30 min. (% R.O)	≤0.03	≤1.0	≤0.03
10	Excitation	Recommended (V)	10	10	10
15		Maximum (V)	15	15	15
-10~+40		Compensated Temperature Range(°C)	-10 ~ +40	-10 ~ +40	-10 ~ +40
-30~+80		Operating Temperature Range(°C)	-30 ~ +80	-40 ~ +70	-30 ~ +80
Nickel Plated Steel		Material & Plate	Paint Finished Steel	Stainless steel	Paint Finished Steel



Platform type Load Cell



CPA	MAS	Model	SPL	EPL
500,1K,2K,3K,5K	2,5,10,20,50	Rated Capacity (kgf)	20,50,60,100,200,300,400	50,100,200
D3	-	Accuracy Class	-	-
≤0.14	≤0.5	Combined Error (% R.O)	≤0.05	≤0.1
≤0.03	-	Creep for 30 min. (% R.O)	≤0.03	≤0.1
10	10	Excitation	Recommended (V)	10
15	15		Maximum (V)	15
-10 ~ +40		Compensated Temperature Range(°C)	-10 ~ +40	-10 ~ +40
-40 ~ +70		Operating Temperature Range(°C)	-30 ~ +80	-30 ~ +80
Nickel Plated Steel	Anodized Aluminum	Material & Plate	Zinc Plated Steel, Stainless Steel Cover	Stainless Steel Cover

Explosion Proof Load Cell

- Intrinsic Safety(EX ia IIC T4)
- ☒ Flame proof enclosure(EX d IIC T4)
- ★ Dust ignition proof(Ex tD A21 T135 °C IP66)



Low Capa



High Capa



BSS-EXP

BSS-EXP-D



Model	BCA-EXP		BCEP-EXP/-D				BSS-EXP/-D	
Rated Capacity (kgf)	5,6,10,15,20,30,50,60,75,100		10,20,50		100,200,300		500,1K,2K,3K,5K	
Accuracy Class	D3	C3	D3	C3	D3	C3	D3	C3
Combined Error (% R.O)	≤0.03	≤0.02	≤0.03	≤0.02	≤0.03	≤0.02	≤0.03	≤0.025
Creep for 30 min. (% R.O)	≤0.03	≤0.017	≤0.03	≤0.017	≤0.03	≤0.017	≤0.03	≤0.017
Excitation	Recommended (V)		10				10	
	Maximum (V)		28				15	
Compensated Temperature Range(°C)		-10 ~ +40		-10 ~ +40		-10~+40		
Operating Temperature Range(°C)		-30 ~ +80		-30 ~ +80		-30~+80		
Material & Plate		Anodized Aluminum		Stainless Steel, Buffing		Stainless Steel		
Explosion proof (ia:O/d:☒/tD:★)		○		BCEP-EXP : ○ BCEP-EXP-D : ☒, ★		BSS-EXP:○ BSS-EXP-D: ☒, ★		

Explosion Proof Load Cell

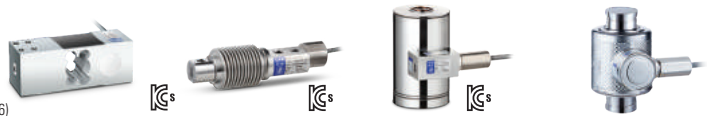
- Intrinsic Safety(EX ia IIC T4)
- ☒ Flame proof enclosure(EX d IIC T4)
- ★ Dust ignition proof(Ex tD A21 T135 °C IP66)



Model		SBS-EXP/-D	LS-EXP/-D		LSS-EXP/-D
Rated Capacity (kgf)		500,1K,2K,5K	1K,2K,3K,5K,10K,20K,30K,50K 100K,200K		1K,2K,3K,5K,10K, 20K,30K,50K
Accuracy Class		-	D3	C3	-
Combined Error (% R.O)		≤0.05	≤0.05	≤0.02	≤0.03
Creep for 30 min. (% R.O)		≤0.03	≤0.03	≤0.03	≤0.03
Excitation	Recommended (V)	10	10		10
	Maximum (V)	15	15		15
Compensated Temperature Range(°C)		-10~+40	-10~+40		-10~+40
Operating Temperature Range(°C)		-30~+80	-30~+80		-30~+80
Material & Plate		Stainless Steel	Paint Finished Steel		Stainless Steel
Explosion proof (ia:○/d:☒/tD:★)		SBS-EXP:○/SBS-EXP-D:☒, ★	LS-EXP:○/LS-EXP-D:☒, ★(1~50K kgf)		LSS-EXP:○/LSS-EXP-D:☒, ★

Explosion Proof Load Cell

- Intrinsic Safety(EX ia IIC T4)
- ☒ Flame proof enclosure(EX ia IIC T4)
- ★ Dust ignition proof(Ex tD A21 T135 °C IP66)



Model		BCD-EXP	HBS-EXP		CTS-EXP		WBK-EXP/-D	
Rated Capacity (kgf)		75,100,150, 250,300,500	10,20,50,100, 200,250,500		200,300,500, 1K,2K,3K,5K		10K,25K,30K,50K	
Accuracy Class		-	D3	C3	D3	C3	D3	C3
Combined Error (% R.O)		≤ 0.03	≤0.03	≤0.02	≤0.05	≤0.02	≤0.03	≤0.02
Creep for 30 min. (% R.O)		≤ 0.03	≤0.03	≤0.017	≤0.03	≤0.03	≤0.03	≤0.017
Excitation	Recommended (V)	10	10		10		10	
	Maximum (V)	28	15		15		15	
Compensated Temperature Range(°C)		-10 ~ +40	-10~+40		-10 ~ +40		-10~+40	
Operating Temperature Range(°C)		-30 ~ +80	-30~+80		-30 ~ +80		-40~+70	
Material & Plate		Anodized Aluminum	Stainless Steel		Stainless Steel		Stainless Steel	
Explosion proof(ia:○/d:☒/tD:★)		○	○		CTS-EXP:○ / CTS-EXP-D:☒, ★		WBK-EXP:○ / WBK-EXP-D:☒, ★	

Digital Load Cell



Model		WBK-D	DSB-D
Rated Capacity (kgf)		10K,20K,25K,30K	10K,20K,25K,30K
Accuracy Class		-	-
Combined Error (% R.O)		<0.015	<0.015
Creep for 30 min. (% R.O)		<0.017	<0.017
Excitation	Recommended (V)	9	9
	Maximum (V)	24	24
Compensated Temperature Range(°C)		-10~+40	-10~+40
Operating Temperature Range(°C)		-40~+70	-20~+70
Material & Plate		Stainless Steel	Nickel Plated Steel

Printer



Model	BP-DT-4	BP-1100 ^{PLUS}	CLK-B10/B20	CLK-T41
Print method	Direct thermal	Direct thermal/ Thermal Transfer	Direct thermal/ Thermal Transfer	Direct thermal
Print Speed	100mm/sec	100mm/sec	102 or 152mm/sec	140mm/sec
Resolution	203dpi	203dpi	203dpi	203dpi
Print Width(mm)	108	108	104	56
Paper Width(mm)	118	118	18~118	59
Roll diameter(mm)	127	127	127/200	60
Dimension (mm) (W x D x H)	168 x 218 x 166	226 x 285 x 171	215 x 287 x 231	119(W)x181(D)x106(H)
Weight (kg)	1.5	2.72	3.6	1.7
Power	AC100~240V / DC24V 2.5A	AC100~240V/50~60Hz	AC100~240V / DC24V 2.5A/24V 2.92A	AC100~240V/DC24V 2.5A
Memory	Flash 4MB, SDRAM 8MB	Flash 4MB, SDRAM 8MB	Flash 2.5/ 5MB/ SDRAM 8MB	Flash 2MB
Interface	Serial, USB	Serial, Parallel, USB	Serial, Parallel, USB	-



Model	DEP/DLP-50	CP-7020	CP-7100	CP-7200
Print method	Direct thermal	Dot/Thermal	Dot/Thermal	Dot/Thermal
Print Speed	50mm/sec	46CPS	25mm/sec	25mm/sec
Resolution	203dpi	-	-	-
Print Width(mm)	48	40,30COLUMNS	40,36,30,24COLUMNS	24COLUMNS
Paper Width(mm)	-	57	57	57
Roll diameter(mm)	-	50	50	50
Dimension (mm) (W x D x H)	106(W)x180(D)x88(H)	175(W)x165(D)x105(H)	122(W)x79(D)x135(H)	110(W)x167(D)x87(H)
Weight (kg)	0.4	2	0.56	0.53
Power	DC 12V	AC100~240V	DC12V(1.6A) / DC5V(2.5A)	DC12V(1.6A) / DC5V(2.5A)
Memory	-	SDRM 8MB	-	-
Interface	Serial	Serial	Serial, Parallel	Serial, Parallel



Model	B-EV4D	B-452
Print method	Direct Thermal	Direct thermal/Thermal Transfer
Print Speed(mm/sec)	Max127.0	50.8~101.6 (2~4")
Resolution(dpi)	200	300
Print Width(mm)	108	50.8~101.6(2~4")
Memory	Flash ROM 4MB, DRAM 8MB	Flash ROM 16MB, D-RAM 16MB
Interface	Serial, Parallel, USB, LAN	Parallel, USB, LAN (Serial)
Options	B-EV204-F-QM-R (Swing Cutter Module) B-EV904-H-QM-R (Strip Module)	B-7204-QM (Cutter Module) B-7904-H-QM (Strip Module) B-7704-RS-QM (Serial interface Board)



Model	B-SA4TM-GS12	B-SA4TM-TS12	B-SX4T	B-SX5T
Print method	Direct thermal/Thermal Transfer		Direct thermal/Thermal Transfer	
Print Speed(mm/sec)	50.8~152.4 (2~6")		76.2~254 (3~10")	76.2~203.2 (3~8")
Resolution(dpi)	203dpi	300dpi	203dpi	306dpi
Print Width(mm)	104	105.7	104	127.5
Memory	Flash ROM 16MB, D-RAM 16MB		Flash ROM 4MB, DRAM 8MB	Flash ROM 4MB, DRAM 16MB
Interface	USB, Parallel, LAN (*serial, W-LAN)		serial, Parallel, Expansion I/O(*USB, LAN)	
Options	B-SA204-QM-R (Cutter Module) B-SV904-H-QM-R (Strip module) B-SA704-RS-QM-R (Serial Interface Board) B-SA704-WLAN-QM (Wireless LAN Board)		B-4205-QM (Swing Cutter Module) B-8204-QM (Rotary Cutter module) B-9904-H-QM (Strip Module) B-9700-PCM-QM (PCMCIA Interface Board) B-9700-LAN-QM (LAN Interface Board) B-9700-USB-QM (USB Interface Board)	

Software

Software Mart System

Supporting mart system in a varied form: headquarter integrated system, store-unit system, etc.

Customizing to each mart system

Consulting for system introduction

Model	Mart System
Supported devices	Label Printing Scales
Supported operating systems	Windows, Unix
Communication Module	TCP/IP



CL-Mart
Data editing, transporting

CL-Mart Web
Data editing, transporting

Scheduler
Schedule data transport, collect sales result

Communication module
(DLL, OX) for development

Software CL-Works Pro

Managing information – scale's PLU, store information, keypad, etc.

Sending scale data through a network at a time

Saving and printing account details in database

Model	CL-Works
Supporting Instrument	CL3000, 5000, 5200, 5200J, 5500, 7200
Supported operating systems	Windows
Communication Protocols	RS-232C, TCP/IP



Software ES-Works

ER^{PLUS}, EB PLU management function

Support PLU Excel Import/Export

Login function

Weight value handling function (IM-Works) by interlocking PC

Model	ES-Works
Supporting Instrument	ER ^{PLUS} , EB
Supported operating systems	Windows, Unix
Communication condition	RS-232C

▶ Weight value handling function



Software iM-Works^{PRO}

Weighing data management by connecting scale and PC

Saving and opening weighing data

Printing weighing data by connecting various label printers (Only for iM-Works Pro)

Export data as a Excel file

User account management



Compatible with label printers to print out

Model	iM-Works
Supporting Instrument	Indicator, DB-II, ER Plus, EB, SW, MWP, ED-H, EC, AD, CUX/CUW, XB, TW-100, X320, CCK5500, MW-IIN, EC-D, XE, (Support printer: TOSHIBA TEC, DLP, BP Series)
Supported operating systems	Windows XP
Communication Protocols	RS-232C

Software ID-Works

Only for Indicator

Indicator mode value set-up function (more than 70 value set-up possible: date, time, weight, conversion speed)

Weighing value by using flash animation

Supports real time graph and saving function

Simple to save and call items



Mode value setting possible



Real time graph possible



Printing weighing data and statistics



Model	ID-Works
Supporting Instrument	Indicator (Supports some functions of NT-500, NT-570, CI-8000. Only in case, ROM is fully updated)
Supported operating systems	Windows XP
Communication condition	RS-232C

Software NT-Works

Communicating with several indicator available (1 through 15 user random choose available)

Pass / fail fuction by setting upper and lower limit

Each weighing result is saving each excel sheet

Connect to indicators via serial multi-port (RS-232C communication)



Printing excel data



Model	NT-Works
Supporting Instrument	CAS Indicator (Maximum of 15 connections)
Supported operating systems	Windows XP
Communication Protocols	RS-232C

Software RW-Works

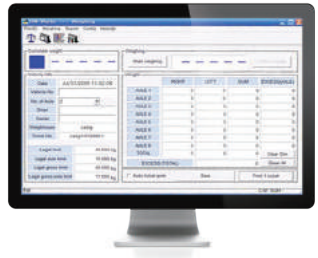
Truck overload controlling program

Weighing each axis, up to 8 axis.

Issue ticket print linkage weighing information

Weighing breakdown database saving search function

▶ Connected to RW-2601P



Model	RW-Works
Supporting Instrument	RW2601P
Supported operating systems	Windows XP
Communication condition	RS-232C

Software TS-Works

PC program for Truck Scale

Issue ticket print linkage weighing information

Customers & products register function

Certification issue function

Function which is available to report by date, vehicle, customer and product



▶ Search data



▶ See the reports



Model	TS-Works
Supporting Instrument	RW2601P, Indicator
Supported operating systems	Windows XP
Communication condition	RS-232C

Software DP-Works

Server configuration with client

Sending production activities of multiple clients to server with weight

Managing the data received from data in database

Supporting external display

Indicating status and ranking



▶ Screen shot of ranking data list

Model	DP-Works
Supporting Instrument	CAS Indicator
Supported operating systems	Windows XP
Communication Protocols	RS-232C, TCP/IP

Software BK-Works

Combining user's favorable functions to compose a program (Widgets on dash board)

Providing widget with a diverse function-Measuring list, logo, user account, graph, print-out, etc.

Model	BK-Works
Supporting Instrument	CAS Indicator, CAS Balance
Supported operating systems	Windows 7
Communication Protocols	RS-232C, TCP/IP

▶ Background image applicable



▶ Providing widget with a diverse function



▶ Screen shot of details of each device



Software SC-Works

Checking the bound-pair of weight data and managing the data

Supporting for connections up to 24

Supporting various communication methods : 1:1 connection, 1:N connection (Command Type)

Output for each equipment: maximum, minimum, mean, standard deviation, upper/lowest number, normal number

Model	SC-Works
Supporting Instrument	CAS Indicator, CAS Balance
Supported operating systems	Windows XP
Communication Protocols	RS-232C

Software GP-Works

Finding weight data progress in a graph form

Supporting for connections up to 8

Output for each equipment – maximum, minimum, mean, standard deviation

Customized (individually) setting for chart type and color

Model	GP-Works
Supporting Instrument	CAS Indicator, CAS Balance
Supported operating systems	Windows XP
Communication Protocols	RS-232C

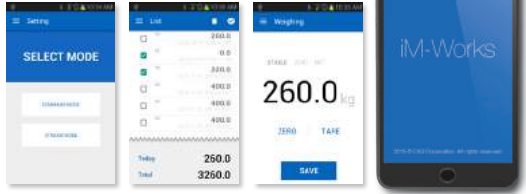
▶ Dual View



Software **iM-Works** for Android

- ▶ Displays device code of industrial bluetooth
- ▶ Data sharing by email after saving data and exporting CSV
- ▶ Disconnect the TWN from the scale in order to use (Automatically disconnected while moving the scale)type

Model	iM-Works for Android
Supporting Instrument	CASTON, TM
Supported operating systems	Android 4.1.2
Communication Protocols	RS-232C



Software **MixPlus**

- ▶ Ingredient mixing program
- ▶ Managing ingredients information DB
- ▶ Check and save measurement data
- ▶ Data backup and restore function



Model	MixPlus
Supporting Instrument	CAS Indicator
Supported operating systems	Windows XP
Communication Protocols	RS-232C

Software **COG**

- ▶ Weighing 1~16 points
- ▶ Calculating center of the material by measuring weights
- ▶ Save weighing data to Access data
- ▶ Exporting data to excel sheet

Model	COG
Supporting Instrument	Custom-made product
Supported operating systems	Windows XP
Communication condition	Zigbee





World Class Weighing Solution



At 1987, CAS started to export to Portugal and grew up global brand through aggressive market expansion.

CAS has been the global corporation with gaining weighing certification of various countries and dealers who have good partnership.

CAS will support the customers' business through total weighing solution and be customers' partner that customers recognize.

Globalcas



CAS Headquarter

#262, GEURUGOGAE-RO, GWANGJEOK-MYEON,
YANGJU-SI, GYEONGGI-DO, KOREA
Tel : 82 - 31 - 820 - 1100
Fax : 82 - 31 - 840 - 6489



CAS_VIETNAM(HO CHI MINH)

CAN DIEN TU CHINE AN SIEU(CAS)
90/8 PHAN VAN HON, KP5,P. TAN THOI NHAT, Q12
HO CHI MINH, VIETNAM
Tel : 84-08-3719-2266-8
Fax : 84-08-3719-0919



CAS_BANGLADESH

CAS SCALE BD (PVT) LTD.
MONGROM VILLA, 152/2/A/1
GREEN ROAD, DHAKA-1215, BANGLADESH
Tel : 88-2-911-2020, 88-2-814-1351
Fax : 88-2-911-2020

CAS_Seoul Office

CAS BLDG, 1315, YANGJAE-DAERO,
GANGDONG-GU, SEOUL, KOREA
TEL : 82-2-2225-3500
FAX : 82-2-475-4688

CAS_VIETNAM(HANOI)

VILLA NO 9, ROW 16A7, EUROPE OVERSEAS
VIETNAMESE-MO LAO, HA DONG,
HANOI, VIETNAM
Tel : 84-9-8627-1130(KR), 84-9-7970-8282(VN)
Fax : 84-4-3577-1049



CAS POLAND

SP. ZOO. CHROSCICKIEGO 93/105
02-414 WARSAW, POLAND
Tel : 48-22-5719-470
Fax : 48-22-5719-471



CAS USA

99 MURRY HILL PARKWAY EAST
RUTHERFORD, NJ 07073
Tel : 1-201-933-9002
Fax : 1-201-933-9025



CAS_CHINA

ROOM 306-307, TOWER B, L2 BUILDING, HONGGIAO
WORLD CENTER, 1588 LANE ZHUGUANG ROAD,
QINGPU DISTRICT, SHANGHAI, CHINA.
Tel : 86-21-5768-0558
Fax : 86-21-5768-0560



CAS_DEUTSCHLAND

CAS DEUTSCHLAND AG BRACKESTASSE 1 38159
VECHELDE, GERMANY
Tel : 49-53-112-9790
Fax : 49-531-12979-29



CAS_TURKEY

YUKARI DUDULLU BOSTANCI CAD MEVDUDI SOK
NO.34 UMRANIYE / ISTANBUL TURKEY
Tel : 90-216-540-8120
Fax : 90-216-540-8128



CAS_INDIA

568, UDYOG VIHAR, PHASE-V,
GURGAON - 122016 HARYANA, INDIA
Tel : 91-124-234-2621/3/4
Fax : 91-124-234-2626



CAS_JAPAN

CAS JAPAN CORPORATION CO, LTD.
1F., PIA EMILE, 116-1, SUIDO-CHO, AOI-KU,
SHUZUOKA-SHI, SHUZUOKA 420-0008, JAPAN
Tel : 81-54-266-7534
Fax : 81-54-266-7524



CAS

CAS BLDG., 1315, YANGJAE-DAERO,
GANGDONG-GU, SEOUL, KOREA
TEL_ 82 2 2225 3500
FAX_ 82 2 475 4668

Specifications are subject to change without notice improvement.

C-12203102